

MIAMI-DADE COUNTY PUBLIC SCHOOL  
DISTRICT'S UNIVERSAL PARENT/STUDENT HANDBOOK

**ROBERT MORGAN EDUCATIONAL CENTER HIGH SCHOOL**

**18180 SW 122 AVENUE, MIAMI, FLORIDA 33177**

**305-253-9920**

**SCHOOL HOURS: 7:15 AM – 2:15 PM**

**<http://robertmorganeducenter.com>**



**FOLLOW US:**

**INSTAGRAM – [rmec.pirates](#)  
FACEBOOK – RMEC Principal  
TWITTER - [@RMEC\\_pirates](#)**



MIAMI-DADE COUNTY PUBLIC SCHOOL  
DISTRICT'S UNIVERSAL PARENT/STUDENT HANDBOOK

Miami-Dade County Public Schools  
The School Board of Miami-Dade County, Florida

Ms. Perla Tabares Hantman, Chair

Dr. Steve Gallon III, Vice Chair

Dr. Dorothy Bendross-Mindingall

Ms. Susie V. Castillo

Dr. Lawrence S. Feldman

Dr. Martin Karp

Dr. Lubby Navarro

Dr. Marta Pérez

Ms. Mari Tere Rojas

Student Advisor

Maria Martinez

**SUPERINTENDENT OF SCHOOLS**

Mr. Alberto M. Carvalho

**SCHOOL OPERATIONS**

Mrs. Valtena G. Brown

**Deputy Superintendent/Chief Operating Officer**



# MIAMI-DADE COUNTY PUBLIC SCHOOL DISTRICT'S UNIVERSAL PARENT/STUDENT HANDBOOK

## **Vision Statement**

*We provide a world class education for every student.*

## **Mission Statement**

*To be the preeminent provider of the highest quality education that empowers all students to be productive lifelong learners and responsible global citizens.*

## **Values**

**Excellence** - *We pursue the highest standards in academic achievement and organizational performance.*

**Equity** - *We foster an environment that serves all students and aspires to eliminate the achievement gap.*

**Student Focus** - *We singularly focus on meeting our students' needs and supporting them in fulfilling their potential.*

**Innovation** - *We encourage creativity and adaptability to new ideas and methods that will support and improve student learning.*

**Accountability** - *We accept responsibility for our successes and challenges and seek to transparently share our work in an ethical manner, as we strive towards continuous improvement.*



# MIAMI-DADE COUNTY PUBLIC SCHOOL DISTRICT'S UNIVERSAL PARENT/STUDENT HANDBOOK



## Miami-Dade County Public Schools

*giving our students the world*

**Superintendent of Schools**  
Alberto M. Carvalho

**Miami-Dade County School Board**  
Perla Tabares Hantman, Chair  
Dr. Steve Gailon III, Vice Chair  
Dr. Dorothy Bendross-Mindingoff  
Susie V. Castillo  
Dr. Lawrence S. Feldman  
Dr. Martin Karp  
Dr. Lubby Navarro  
Dr. Marta Pérez  
Mari Tere Rojas

August 2020

Dear Parent/Guardian:

On behalf of the School Board and the dedicated teachers and staff of Miami-Dade County Public Schools (M-DCPS), it is with much pride and enthusiasm that I welcome you to the 2020-2021 school year. As we continue responding to the COVID-19 pandemic, we understand the critical role of schooling in providing students and families with a sense of routine and comfort. We remain eager to greet your child and provide him/her with the knowledge and skills needed to thrive in our increasingly globalized society. Students can expect to receive a world-class education in an "A"-rated school system that celebrates their uniqueness while fostering curiosity and creativity within a safe and secure learning environment.

This Parent/Student Handbook outlines the major policies and procedures that guide student life in our school system. I strongly encourage you to familiarize yourself with its contents as students are expected to conduct themselves in accordance with the information and guidelines contained herein.

Furthermore, it is my hope that you and your child will avail yourselves of the numerous resources we provide. As a parent/guardian, you are a vital partner in your child's education and are welcome to actively participate in school and district functions. I encourage you to stay connected by downloading the M-DCPS application on your mobile device and by following us on social media (Twitter, Facebook, Instagram, etc.). For more information regarding specific resources and activities at your child's school, please contact the school directly and ensure that the school's staff is provided with your most updated contact information.

Thank you for your partnership and for entrusting us with your child's education. I wish you and your child much success this academic year.

Sincerely,

Alberto M. Carvalho  
Superintendent of Schools

AMC:cg  
L088

School Board Administration Building • 1450 N.E. 2<sup>nd</sup> Avenue • Miami, FL 33132  
305-995-1000 • [www.dadeschools.net](http://www.dadeschools.net)



MIAMI-DADE COUNTY PUBLIC SCHOOL  
DISTRICT'S UNIVERSAL PARENT/STUDENT HANDBOOK

**TABLE OF CONTENTS**

<b>Message from Principal</b>	<b>8</b>
<b>School's Mission Statement</b>	<b>9</b>
<b>Alma Mater</b>	<b>9</b>
<b>Faculty Roster</b>	<b>10</b>
<b>Addendum to 2020-2021 Parent/Student Handbook Miami-Dade County Public Schools COVID-19 Policies and Procedures for the Schoolhouse Instructional Model</b>	<b>11</b>
<b>School Information</b>	<b>19</b>
<ul style="list-style-type: none"><li><i>Bell Schedule</i></li><li><i>Early Sign Out</i></li><li><i>Late Arrival</i></li><li><i>Lost and Found School Policy</i></li><li><i>Opening and Closing Hours of Schools</i></li></ul>	
<b>Important Dates</b>	<b>20</b>
<ul style="list-style-type: none"><li><i>Back to School Nights - Open House (as applicable)</i></li><li><i>Interim Progress Report &amp; Report Card Distribution</i></li></ul>	
<b>Academic Programs – Student Progression Plan (SPP)</b>	<b>20</b>
<b>Bring Your Own Devices (BYOD)</b>	<b>20</b>
<b>Bullying/Cyberbullying</b>	<b>20</b>
<b>Clinic</b>	<b>21</b>
<b>Closing of School</b>	<b>21</b>
<b>Discrimination/Harassment</b>	<b>21</b>
<b>Dismissal</b>	<b>22</b>
<ul style="list-style-type: none"><li><i>Bicycles/Skateboards</i></li><li><i>Rainy Day Dismissal</i></li><li><i>Students Drop-Off Pick-up</i></li></ul>	



# MIAMI-DADE COUNTY PUBLIC SCHOOL DISTRICT'S UNIVERSAL PARENT/STUDENT HANDBOOK

<b>Early Dismissal</b>	<b>22</b>
<b>Elevator</b>	<b>22</b>
<b>Emergency Contact Information</b>	<b>22</b>
<b>Fieldtrips</b>	<b>22</b>
<b>Homework</b>	<b>23</b>
<b>Mealtime Environment</b>	<b>24</b>
<ul style="list-style-type: none"> <li>• <i>Free Breakfast</i></li> <li>• <i>Free/Reduced Price Lunch Program</i></li> <li>• <i>Meal Prices</i></li> <li>• <i>PAYPAMS</i></li> <li>• <i>Peanut-Allergies/Peanut-Free School</i></li> </ul>	
<b>Mental Health Services</b>	<b>25</b>
<b>Parent Toolkits</b>	<b>25</b>
<ul style="list-style-type: none"> <li>• Back to School Toolkit</li> </ul>	
<b>Protocols for Addressing Concerns</b>	<b>25</b>
<b>Public-Private Collaboration</b>	<b>26</b>
<b>Recess</b>	<b>26</b>
<b>Safety and Security</b>	<b>26-27</b>
<ul style="list-style-type: none"> <li>• Emergency Operations Plan</li> <li>• Fire Drills</li> <li>• Emergency Drills</li> <li>• Lockdown Procedures</li> <li>• Threat Assessments</li> <li>• Visitors</li> </ul>	
<b>School Activities/Clubs</b>	<b>28</b>
<b>School Center for Special Instructions (SCSI)</b>	<b>29</b>
<b>School Class Pictures Process</b>	<b>29</b>
<b>School Transportation</b>	<b>29</b>



# MIAMI-DADE COUNTY PUBLIC SCHOOL DISTRICT'S UNIVERSAL PARENT/STUDENT HANDBOOK

<b>Special Education/Section 504</b>	<b>29-30</b>
<b>Student Records</b>	<b>30</b>
<b>Student Services</b>	<b>30</b>
<b>Student Success Centers</b>	<b>30</b>
<b>The Parent Academy</b>	<b>30-31</b>
<b>Transgender and Gender Non-Conforming Students</b>	<b>31</b>
<b>Verification of Residency</b>	<b>31</b>
<b>Volunteer Program</b>	<b>31-32</b>
<b>Appendix A - School Calendars</b>	<b>33</b>
<b>Appendix B – Florida Statutes and School Board Policies</b>	<b>40</b>
<b>Appendix C – Disclosure at Time of Registration</b>	<b>56</b>
<b>Appendix D – Discrimination/Harassment Poster</b>	<b>58</b>



# MIAMI-DADE COUNTY PUBLIC SCHOOL DISTRICT'S UNIVERSAL PARENT/STUDENT HANDBOOK

## Message from the Principal

Dear Parents & Students,

On behalf of the administrative team and teachers at Robert Morgan Educational Center (RMEC), I would like to welcome you to our school.

The Student Handbook has been prepared to inform you about the educational programs, requirements and procedures that must be adhered to while attending RMEC. With 5 Academies and 23 program offerings, we pride ourselves in being the Miami-Dade County Public Schools leader in college & career pathways!

I am excited to lead your children as we navigate into uncharted waters. While our diverse campus is comprised of two schools, we are one family. To be a Pirate is to be part of an educational entity that provides numerous avenues of opportunities. This year's theme is Navigating through Uncharted Waters. This is defined as an unknown or not-recorded body of water on a map, part of an ocean that no one has successfully ventured. Together, we will guide your children through unprecedented times and work together to promote growth, learning and guidance, all while supporting one another.

Personally, I am both honored and excited to lead our Pirate Family to bright and promising horizons!

*Kenneth L. Williams, Principal*

Robert Morgan Educational Center High School & Technical College





# MIAMI-DADE COUNTY PUBLIC SCHOOL DISTRICT'S UNIVERSAL PARENT/STUDENT HANDBOOK

## **Robert Morgan Educational Center**

### **School Mission Statement**

RMEC is committed to impart the knowledge and skills that will facilitate the acquisition of those qualities essential to successful global employment and a productive and prosperous life.

### **Alma Mater**

Pirates gather, lift your voice!  
Robert Morgan, School of Choice.  
Alma Mater,  
Alma Mater,  
Gold and Burgundy!  
Pirates gather, lift your voice!  
Robert Morgan, School of Choice,  
Alma Mater,  
Alma Mater,  
Gold and Burgundy!  
Memories and friendships true:  
To our school, we sing to you.  
Quest for knowledge,  
Career or college,  
Sailing to prosperity!

### **Faculty Roster**

Adams, John  
Almeida, Celia

Anderson, Kimberly  
Bange, Debra



# MIAMI-DADE COUNTY PUBLIC SCHOOL DISTRICT'S UNIVERSAL PARENT/STUDENT HANDBOOK

Barrett, Stephen  
Bethune, Latonya  
Blair, Maria  
Blanco, Yonetsy  
Brcek, Ivan  
Budhram, Gangaram  
Carithers, Sandra  
Carter, Latoya  
Chance, Shelia  
Clark, Colleen  
Clayton, Harvey  
Collazo, Kristen  
Crapp, Candice  
Curry, Jeffrey  
Delgado, Martha  
Del Rio, Lazaro  
Demeritte, Maria  
Díaz, Tammy  
Doctor, Rhana  
Douglas, Leroy  
Fernandez, Nina  
Feuillet, Martha  
Figueroa, Marcus  
García-Minsal, Ariana  
Gembicki, Deborah  
George, Joseph  
Goldman, Andrea  
Gooding, Khristal  
Goutier, Alexandra  
Gudi, Vandana  
Haney, Merrill  
Harden, Carmen  
Harden, James  
Harpp, Lamont  
Hernández, Martha  
Hoppe, Tracy  
Hudson, Brendette  
Hughes, Alina  
Jackson, Atisha  
Jennings, Pam  
Leon-Admire, Rosa  
Leon, Julio  
Lowe, Tiffany  
Lujardo, Lissette  
Lynch, Bevance  
Manasco, Rachel

Marshall, Tina  
Marchese, Angel  
Martin, Timothy  
McMillian, April  
Mederos, Anddy  
Mesa, Wendy  
Mila, Lillian  
Nelson, David  
Nunez, Melissa  
Ojeda, Naidiana  
Okesola, William  
Ortiz, Laura  
Patel, Indu  
Peña, Janelle  
Pérez-Archilla, Doreen  
Persaud, Davika  
Pierre, Rodney  
Phanord, Martine  
Quintela, Rafael  
Radcliff, Michaelyn  
Ramirez, Christopher  
Robinson, Marc  
Rojas Benitez, Ana  
Rohan, Kathryn  
Rosa, Helena  
Santerre, Misti  
Scheck, Cristina  
Schneider, Jessica  
Schneider, Steven  
Sheary, Matthew  
Shur, Marcelina  
Sixto, Marite  
Smith, John  
Steinberg, Eugenia  
Tinoco, Gradys  
Torres, Diana  
Torres, William  
Tucker-Jones, Dedra  
Vargas, Judy  
Waddell, Katherine  
Wilcox, Eddie  
Williams, Dennis  
Williams, Denzel



# MIAMI-DADE COUNTY PUBLIC SCHOOL DISTRICT'S UNIVERSAL PARENT/STUDENT HANDBOOK

## **Addendum to 2020-2021 Parent/Student Handbook** **Miami-Dade County Public Schools** **COVID-19 Policies and Procedures for the Schoolhouse Instructional Model**

During declared health emergencies, the District will implement policies and procedures consistent with applicable Centers for Disease Control and Prevention (CDC) and Florida Department of Health (FDOH) guidance. In addition, as applicable, the District will consult with and comply with applicable local health department protections. Requirements and procedures established by the District in response to an emergency affecting the health safety and welfare of our students and staff will take precedence over provisions of the Parent/Student Handbook when necessary and until the emergency has ended. Due to circumstances related to the COVID-19 public health emergency, Miami-Dade County Public Schools may need to alter or suspend select in-person operations to protect the health and safety of its students, employees, and their families. Please refer to <http://reopening.dadeschools.net/index.html> to find updated information regarding the District's reopening plan. The following procedures and guidelines are applicable to student attendance in brick and mortar buildings during Stage II reopening.

### **Arrival Procedures During Stage II**

Children, parents and visitors are always required to maintain the maximum amount of social distancing possible during arrival. No one should congregate in large groups.

#### **Staggered Arrivals**

Arrival Times: Staggered

	<b>Parent/Guardian Drop Off</b>	<b>Bus Riders</b>	<b>Walkers</b>
<b>9<sup>th</sup> Grade</b>	6:30 am- 6:40 am	Random	6:30 am- 6:40 am
<b>10<sup>th</sup> Grade</b>	6:40 am- 6:50 am	Random	6:40 am- 6:50 am
<b>11<sup>th</sup> Grade</b>	6:50 am- 7:00 am	Random	6:50 am- 7:00 am
<b>12<sup>th</sup> Grade</b>	7:00 am -7:10 am	Random	7:00 am -7:10 am

- What areas in the building can be utilized as safe holding areas while maintaining social distance requirements as students wait for the school day to begin? **Cafeteria, and Court yards**
- Parent/guardian drop-off protocols? **Parents will remain in vehicles. Students will exit and wear face coverings before entering building. Staggered arrivals time (See Table). Parent drop off will occur in different locations. Use entrance located on 181 St, 181 Tr., 183 St.**

### **Dismissal Procedures During Stage II**

Children, parents and visitors are always required to maintain the maximum amount of social distancing possible during arrival. No one should congregate in large groups.



# MIAMI-DADE COUNTY PUBLIC SCHOOL DISTRICT'S UNIVERSAL PARENT/STUDENT HANDBOOK

## Dismissal Times: Staggered

	Parent/Guardian Drop Off	Bus Riders	Walkers
<b>South Campus (High School)</b>	2:05 pm	2:05 pm	2:05 pm
<b>1<sup>st</sup> Floor North Campus</b>	2:10 pm	2:10 pm	2:10 pm
<b>2<sup>nd</sup> Floor North Campus</b>	2:15 pm	2:15 pm	2:15 pm

- Caregivers, please wear cloth face coverings or masks during pick-up.
- Caregivers, please do exit cars/motorbikes/bicycles when picking up children to limit mixing and crowding pick-up point
- Early parent pick-up will be by appointment. To schedule appointment call 305-253-9920 ext. 2911, 2511, 2515 or email 12 hrs. in advance [kgraff@dadeschools.net](mailto:kgraff@dadeschools.net). Confirmation will be made via phone (Parent Only). Student will be escorted to parent waiting outside building. Parent ID is required to release student.
- Students that are not picked up on time? Students will wait in front of high school while they wait for pick-up maintaining social distance wearing their mask.



# MIAMI-DADE COUNTY PUBLIC SCHOOL DISTRICT'S UNIVERSAL PARENT/STUDENT HANDBOOK

## Breakfast/Lunch During Stage II

### Breakfast

Staggered / As they Arrive

	Parent/Guardian Drop Off	Bus Riders	Walkers
<b>9<sup>th</sup> Grade</b>	6:30 am- 6:50 am	6:30 am- 6:50 am	6:30 am- 6:50 am
<b>10<sup>th</sup> Grade</b>	6:30 am- 6:50 am	6:30 am- 6:50 am	6:30 am- 6:50 am
<b>11<sup>th</sup> Grade</b>	6:50 am- 7:10 am	6:50 am- 7:10 am	6:50 am- 7:10 am
<b>12<sup>th</sup> Grade</b>	6:50 am -7:10 am	6:50 am -7:10 am	6:50 am -7:10 am

### Lunch Schedule

BLOCK BELL SCHEDULE - DISTANCE LEARNING PHASE II

BLOCK I (Includes 5 min homeroom) 7:15 am – 9:20 am

Passing 9:20 am – 9:25 am

BLOCK II 9:25 am- 12:10 pm (Includes 35 min. Lunch)

*LUNCH A 10:10 am – 10:50 am* (Includes 5 min. Passing)

*LUNCH B 10:50 am – 11:30 am* (Includes 5 min. Passing)

*LUNCH C 11:30 am- 12:10 pm* (Includes 10 min. Passing)

Passing 12:10 pm – 12:15 pm

BLOCK III 12:15 pm - 2:15 pm



# MIAMI-DADE COUNTY PUBLIC SCHOOL DISTRICT'S UNIVERSAL PARENT/STUDENT HANDBOOK

## School Transitions

All MDCPS schools have put procedures in place to limit large group gatherings. Signage has been placed throughout every campus to remind students of the expectations to promote the safest learning environment possible. When transition between classrooms is necessary schools have developed a plan of either one way or two-lane hallways depending on school design and need. School staff will monitor transitions to ensure students are maintaining maximum social distancing and wearing face coverings. Parents should remind students of the need to comply with school procedures to ensure their safety as well as their classmates.

- We have designated one-way hallways throughout the building to avoid students crossing paths. In some areas there will be two lanes to ensure consistent traffic flow therefore we will tape the center of the hallway to remind students to stay to the right. All stairwells will be one directional as well which will avoid cross traffic and allow students to spread out on the stairwells.
- During class change students move from class to class, one-way paths have been created for student transitions, which will allow for 6 ft. distancing as they move from one location to the next.
- Staggered release time will be utilized at dismissal.

	Parent/Guardian Drop Off	Bus Riders	Walkers
<b>South Campus (High School)</b>	2:05 pm	2:05 pm	2:05 pm
<b>1<sup>st</sup> Floor North Campus</b>	2:10 pm	2:10 pm	2:10 pm
<b>2<sup>nd</sup> Floor North Campus</b>	2:15 pm	2:15 pm	2:15 pm

- Restrooms will be closed during class transitions.
- Students will use outside space to move about in one direction. Provide physical distancing guides, such as tape, paint, or chalk on floors or sidewalks and signs on walls
- Maps will be posted in Social Media and School website. Teacher will be informed and will discuss with their students. Student orientation will be held to discuss expectations and etiquette. Make frequent announcements (e.g., on PA or through bullhorn) encouraging physical distancing ( $\geq 6$  feet) at all times.
- Teachers & Staff will be asked to post outside their doors to assist in traffic flow.

School custodial staff will perform routine environmental cleaning or regular cleaning for most surfaces. School site custodial procedures have been adjusted to increase the frequency of sanitizing high-touch areas with hospital-grade germicide throughout the day. Upon the end of each day, custodial teams will sanitize all areas of the campus in preparation for the next day of learning.



# MIAMI-DADE COUNTY PUBLIC SCHOOL DISTRICT'S UNIVERSAL PARENT/STUDENT HANDBOOK

## **Duty to Report Symptoms**

If anyone in the student's household is diagnosed with COVID-19, parents/guardians must report that exposure to the school(s). The school will consult with the public health department to assess what precautions should be taken, including but not limited to, asking your student to stay home from school for fourteen (14) days in order to protect the school community. This is a precaution, and the school will work with you to keep your student engaged and current on all schoolwork to the extent possible during the fourteen (14) day period.

## **Daily Pre-Arrival Health Screening**

Before coming to school in the morning, students and parents should assess whether the student has any symptoms of COVID-19. At this time, those symptoms include: a fever over 100.4 degrees Fahrenheit; cough; shortness of breath or difficulty breathing; fatigue; muscle or body aches; headache; new loss of taste or smell; sore throat; congestion or runny nose; nausea or vomiting; or diarrhea. If a student develops any of these symptoms, the symptoms should be reported to the school and discussed prior to the student reporting to school.

While the District will not be taking temperature checks on-site at this time, the school will rely on the students, staff, and families to report accurate information for the safety of all the other families affected throughout the District.

All information provided will be kept confidential as required by law, except to the extent that it is necessary to advise or protect staff and other students from transmission of the virus.

If you have symptoms or are diagnosed with COVID-19, or a family member residing in your household tests positive for COVID-19, your student may be required to stay home until they can be tested or receive medical clearance indicating they do not have COVID-19 and can safely return to school.

## **Expectations of All Students at School**

### General:

1. Stay home if sick.
2. Sanitize hands with hand sanitizer that contains at least 60% alcohol upon entering the building.
3. Wash hands frequently or use hand sanitizer that contains at least 60% alcohol if soap and water are not available.
4. Avoid touching face and eyes.
5. Wash/sanitize hands after touching or removing facial covering.
6. Limit use of shared objects, such as physical education equipment, playground equipment, art supplies, toys, and games. Shared objects will be cleaned after each use.
7. Bring personal water bottles with water. Water fountains will be turned off and hydration stations will be made available for refills.
8. Follow all directions provided by teachers or administrators for the safety of the school community. It is especially important that students stay in the classrooms and spaces



# MIAMI-DADE COUNTY PUBLIC SCHOOL DISTRICT'S UNIVERSAL PARENT/STUDENT HANDBOOK

## Face Coverings and Social Distancing:

1. All persons must maximize physical distancing to the extent possible under the circumstances.
2. All persons must wear facial coverings that cover both the mouth and nose when on school board property, at a school board activity, or riding a bus or in other approved transportation. Students and children over 2 years of age are expected to come to school each day with their personal face coverings. However, quality facial coverings will be available for distribution to students in case of emergency or to reduce stigma where necessary. Students are responsible for their own personal property and face coverings should be stored appropriately. If your child needs a face covering, please contact your child's principal.
3. Facial coverings must be made from a minimum of double layer cloth and be snug fitting to cover both the nose and mouth. Facial coverings should not include any type of exhalation valves or vents or masks designed as a costume.
4. It is recommended to have two face coverings available each day in case one face covering becomes unfit for use. Under no circumstances should student share or swap facial coverings. To learn more about appropriate face covering use and the types of face coverings recommended for use in schools, please review pages 28 and 29 of the District's Reopening Guide [Reopening Guide-English](#)
5. All student facial coverings must meet the requirements of the *Code of Student Conduct* and Policy 5511, Dress Code and School Uniform. Face coverings are apparel/accessory and must not include obscene, profane, drug-related, gang-related, or inflammatory messages or pictorial graphics. Face coverings which include inappropriate language that could be perceived as offensive, derogatory, threatening, or intimidating are strictly prohibited. Repeated display of such face coverings will constitute disciplinary measures as outlined in the *Code of Student Conduct*.
6. Refusal to wear a face covering after directed to comply by an authority figure will constitute defiance of school personnel and/or disruptive behavior pursuant to the *Code of Student Conduct*. Continuous refusal to comply may result in a student being assigned to online or remote learning. Developmental ages and intellectual, developmental, and behavioral disabilities must be duly considered by the principal, as appropriate.
7. Students participating in extracurricular activities, such as athletics, musical or theatrical performances, where the wearing of facial coverings is not practicable or may create a health risk, will be directed by their teacher, coach, or advisor as to when facial coverings may be removed during the activity such as swimming or high intensity activities where breathing may be more difficult. However, students must continue to follow maximum social distancing and all other safety procedures in place for the activity and must resume wearing the facial covering when directed to do so.
8. Exemptions from the use of facial coverings must be requested directly to the school principal. Supporting documentation for the any exemption will be required. Students who have difficulty breathing, or sensory issues arising from a documented medical or psychological issue, or students who have communication issues and may require the teacher or service provider to see their mouth, may request an exemption from the





## MIAMI-DADE COUNTY PUBLIC SCHOOL DISTRICT'S UNIVERSAL PARENT/STUDENT HANDBOOK

Principal. If appropriate, they may be asked to wear a clear facial covering or face shield. Face shields must wrap around the sides of the wearer's face and extend below the chin. Documentation from a medical provider must be on file and reviewed by staff before a student will be excused from this facial covering requirement.

9. Facial coverings should not be required for anyone who is unconscious, incapacitated, or otherwise unable to remove the facial covering without assistance.

### Student Illness at School

If a student becomes ill or exhibits symptoms of COVID-19 while at school, the student will be separated from other students and staff to the designated space identified as the school's Isolation Room. While in the Isolation Room, the student will be monitored by school staff. Students must be picked up by a parent/guardian after initial illness identification. The District will contact parents/guardians and, if needed, the student's emergency contacts. Parents/guardians and/or emergency contacts will be informed of the importance of the student being picked up for the safety of the student and others.

### Return to School

1. Students presenting with general illness symptoms that are non-COVID related will need to remain home until they are symptom-free without the use of medication for 24 hours.
2. Students presenting with COVID-like symptoms, **but no known COVID contact**, are required to remain home until they receive a negative COVID test OR are fever-free without the use of medication for 24 hours AND have improved symptoms.
3. Students presenting with COVID-like symptoms, and **have a known COVID contact**, are required to remain home until they are cleared from isolation or quarantine by a medical professional AND they are fever free without the use of medication for 24 hours AND have improved symptoms.

### Parents and other Visitors

To prevent the spread of COVID-19, visitor access will be limited and restricted to the main office. Visitors are not permitted to enter any District buildings under the following conditions:

1. The individual has any of the following symptoms: a temperature of 100.4 degrees or higher; shortness of breath; cough; loss of taste or smell; muscle aches; weakness; chills; nausea; vomiting; or any other symptoms of COVID-19;
2. The individual has tested positive for COVID-19;
3. The individual has been exposed to someone with symptoms of COVID-19;
4. The individual has been exposed to someone who has tested positive for COVID-19.

Any visitors that are permitted to enter District buildings will be subject to screening, must wear a face covering and adhere to all District guidelines contained at [MDCPS Reopening Website](#),



**MIAMI-DADE COUNTY PUBLIC SCHOOL  
DISTRICT'S UNIVERSAL PARENT/STUDENT HANDBOOK**

CDC, FDOH, and local health department guidelines.

**ACKNOWLEDGEMENT OF ADDENDUM TO PARENT/STUDENT HANDBOOK**

\_\_\_\_\_  
Student Name

\_\_\_\_\_  
Student ID#

\_\_\_\_\_  
School

\_\_\_\_\_  
Homeroom

**ACKNOWLEDGEMENT**

I have read this Addendum to the 2020-2021 Parent/Student Handbook. I agree to abide by these requirements, as well as any other applicable District guidelines, and understand that these requirements are subject to change. In an effort to keep myself and my family safe from infectious disease, specifically COVID-19, I will comply with these requirements.

Specifically, I understand that it is my personal responsibility to ensure that prior to boarding a school bus or arriving at school, I have taken care to assess any potential symptoms of my child, to take my child's temperature, and to ensure that there is no appearance of illness that would warrant my child staying home from school. I acknowledge that this is my responsibility and that for the safety of my school community, I must comply with these policies.

\_\_\_\_\_  
Student Signature

\_\_\_\_\_  
Date

\_\_\_\_\_  
Parent/Guardian Signature

\_\_\_\_\_  
Date



# MIAMI-DADE COUNTY PUBLIC SCHOOL DISTRICT'S UNIVERSAL PARENT/STUDENT HANDBOOK

## Miami-Dade County Public Schools

### School Information

#### BLOCK BELL SCHEDULE - DISTANCE LEARNING PHASE II

BLOCK I (Includes 5 min homeroom) 7:15 am – 9:20 am

Passing 9:20 am – 9:25 am

BLOCK II 9:25 am- 12:10 pm (Includes 35 min. Lunch)

*LUNCH A 10:10 am – 10:50 am* (Includes 5 min. Passing)

*LUNCH B 10:50 am – 11:30 am* (Includes 5 min. Passing)

*LUNCH C 11:30 am- 12:10 pm* (Includes 10 min. Passing)

Passing 12:10 pm – 12:15 pm

BLOCK III 12:15 pm - 2:15 pm

- ***Early Sign Out***

The early release of students causes disruption to the academic performance of all students and may create safety and security concerns. No students shall be released within the final thirty (30) minutes of the school day unless authorized by the Principal or Principal's designee (i.e., emergency, sickness).

- ***Late Arrival***

Students who are tardy to school must report to the Attendance Office to secure an admit. Excessive tardiness may result in loss of privileges, detention, parent conference, and/or suspension.

- ***Lost and Found School Policy***

Students are urged to guard their personal possessions at all times. It is requested that anything that could be valuable to another, e.g., a purse, keys, or eyeglasses, be turned into Student Services immediately. Lost books, when returned, are given to the department who issued them. Students who have lost items should go to Lost and Found, located in the Attendance Office.

- ***Opening and Closing Hours of Schools***

Office Hours 6:30 am - 3:00 pm



# MIAMI-DADE COUNTY PUBLIC SCHOOL DISTRICT'S UNIVERSAL PARENT/STUDENT HANDBOOK

## Important Dates

- ***Back to School Nights – Open House***

School Level	Window Period	School Date
Senior High Schools	TBD	TBD

- ***Interim Progress Report & Report Card Distribution***

Grading Period	Interim Progress Report Distribution	Report Card Distribution
1	9/25/2020	11/6/2020
2	12/4/2020	2/5/2021
3	2/19/2021	4/16/2021
4	5/7/2021	6/25/2021

## **Academic Programs – Student Progression Plan (SPP), School Board Policy 5410**

Provides guidance to teachers, school and district administrators, parents and other stakeholders regarding the requirements and procedures for students to progress from one grade to the next, kindergarten through grade 12 and adult education. The information presented in this document is derived from requirements set forth by Florida Statutes, State Board of Education Rules and Policies established by The School Board of Miami-Dade County.

## **Bring Your Own Device (BYOD)**

Bring Your Own Device allows students, parents, staff and guests to integrate the utilization of technology devices at specified times during the instructional day to enhance the learning experience. Examples of the types of technology which can be used are Windows laptops/tablets, Mac laptops, Android tablets, and iPads.

## **Bullying/Cyberbullying**

The School Board has adopted a policy Against Bullying and Harassment with Bullying defined by state law as systematically and chronically inflicting physical harm or psychological distress on one or more students. Complaints of bullying should be reported to the Principal promptly. Cyberbullying is a form of bullying that takes place virtually over digital devices such as computers, smartphones, and tablets. Cyberbullying most commonly takes place via social media,



## MIAMI-DADE COUNTY PUBLIC SCHOOL DISTRICT'S UNIVERSAL PARENT/STUDENT HANDBOOK

texting, instant messaging, and email. Say NO to cyberbullying! If you or someone you know is being bullied, report this information to the Bullying/Harassment Anonymous Helpline at 305-995-CARE (2273) or the school principal. Resources:

- <http://studentservices.dadeschools.net/#>
- [http://studentservices.dadeschools.net/bullying/b-h\\_policy\\_manual.asp](http://studentservices.dadeschools.net/bullying/b-h_policy_manual.asp)
- [StopBullying.gov](http://StopBullying.gov)
- <https://www.netsmartz.org/Cyberbullying>

### Clinic

The procedure for going to the clinic is as follows:

1. Obtain a **pass** from your classroom teacher to the Attendance Office.
2. Upon arrival to clinic, **Sign-In**. Failure to do so will void your visit to the clinic.
3. Personnel in attendance will determine the appropriate action - to go home or to go to the clinic. A student assigned to the clinic may stay in the **clinic for only 15 minutes**. No medication is to be dispensed according to state law.
4. Parents will be notified should a student need to go home. Students are cautioned that a permit to leave school is mandatory for any student leaving school.

### Closing of School

The emergency closing of a school for any cause, such as weather or in which the safety of individuals may be endangered, is only at the discretion of the Superintendent of Schools.

### Discrimination/Harassment

The School Board has a prohibition against discrimination/harassment based on race, color, ethnic or national origin, citizenship status, religion, marital status, disability, genetic information, age, political beliefs, sexual orientation, gender, gender identification, social and family background, linguistic preference, pregnancy, and any other basis prohibited by law. Students are encouraged to promptly report incidents of discriminatory or harassing conduct to their Principal or the Office of Civil Rights Compliance (CRC) so that the conduct can be addressed before it becomes severe, pervasive, and persistent. The School Board has also adopted a policy Against Bullying and Harassment with Bullying defined by state law as systematically and chronically inflicting physical harm or psychological distress on one or more students. Complaints of bullying should be reported to the Principal promptly.



# MIAMI-DADE COUNTY PUBLIC SCHOOL DISTRICT'S UNIVERSAL PARENT/STUDENT HANDBOOK

## Dismissal

- ***Bicycles/Skateboards***

Bicycles are to be securely placed on the bicycle rack in the front of the school.

- ***Rainy Day Dismissal*** (as applicable)

All dismissal occurs at 2:15 pm. Should there be a safety concern, a plan will be discussed with students and staff in advance

- ***Student Drop-Off Pick-up*** (as applicable)

Student drop-off and pick up occurs in the front of the school. Security personnel direct traffic patterns inside the curb/loop.

## Early Dismissal

In the case of divorced or separated parents, the enrolling parent shall indicate on the Emergency Student Data Form the individual(s) to whom the student may be released during the school day.

## Elevator

The school elevator is to be used by individuals who are disabled or injured and cannot use the stairs.

## Emergency Contact Information

Emergency Student Data Forms are distributed during the first week of school. Students are expected to bring the forms home and present them to their parents/guardians. The form must be carefully completed and returned. The information provided on the Emergency Student Data Forms will enable school staff to contact the parent/guardian immediately in the case of an emergency. Parent/Guardian(s) that provide a cell phone number will receive text messages should an emergency arise. Students may only be released from school to the persons listed on the form after presenting a picture identification. No persons, other than school staff, will have access to the information submitted. Any divorced or separated parent contesting the information in the Emergency Student Data Form may seek assistance from the court governing their divorce, separation, or custody matters to compel the enrolling parent to revise the information.

## Fieldtrips

All fieldtrips must be approved by the principal and Region Superintendent. Participation in fieldtrips requires that the student present a fieldtrip form signed by the parent/guardian to his/her teacher(s) in advance. In addition, at times vendors who have a "no refund" policy will require schools to pay the full amount of the fieldtrip prior to the event. In this case, students/parents will be notified in advance of the vendor's "no refund" policy.



# MIAMI-DADE COUNTY PUBLIC SCHOOL DISTRICT'S UNIVERSAL PARENT/STUDENT HANDBOOK

## **Homework**

Principals are encouraged to work with teachers and parents to implement guidelines found in Homework Policy 2330. Teachers are required to provide students with make-up assignments once the absence has been excused; however, it is the responsibility of the student to request the assignments from the teacher(s).

### **Homework & Makeup Work Plan**

Homework is important to student learning at School. The purpose of this homework plan is to guide teachers, parents and students in ensuring that homework is meaningful and supports the learning experience for all students.

### **Definition**

Homework is any activity or assignment directed by the teacher to be performed outside the classroom that may include practicing skills learned in class, reading, studying, projects, or completion of assignments.

### **Rules for Homework**

Activities or assignments that students can complete independently. Carefully constructed as to be completed within a reasonable time allotment, with minimal adult help. Connected to grade level or subject matter curriculum. Connected to class instruction. Engaging, purposeful and relevant. Consideration shall be given to quality over quantity.

A home education student must register his or her intent to participate in interscholastic extracurricular activities as a representative of the school before participation.

The parents and student must also sign the *Contract for Student Participation in Interscholastic Competitions or Performances*. The District also has policies concerning transfer students and participation in athletics. If a parent has questions concerning these policies, he or she should contact the Division of Athletics, Activities and Accreditation.



# MIAMI-DADE COUNTY PUBLIC SCHOOL DISTRICT'S UNIVERSAL PARENT/STUDENT HANDBOOK

## **Mealtime Environment**

School lunchtime should be an opportunity to encourage healthy lifestyle, promote socialization that will affect early behaviors.

The Department of Food and Nutrition serves healthy meals daily. Please visit [nutrition.dadeschools.net](http://nutrition.dadeschools.net) for details on menus, programs, and services.

- **Free Breakfast**

Miami-Dade County Public Schools offers breakfast free of charge to all M-DCPS Students. The breakfast at no charge is not dependent on the student qualifying for free/reduced price meals at lunch.

- **Free/Reduced Price Lunch Program**

The USDA Child Nutrition Programs as administered by Miami-Dade County Public Schools provide free and reduced priced lunch for children unable to pay the full price. In place of the paper application, School Meal Program Brochures are distributed to all students informing parents on the application process and meal program. Parents are encouraged to complete an online application at the [Department of Food and Nutrition at freeandreducedmealapp.dadeschools.net](http://Department of Food and Nutrition at freeandreducedmealapp.dadeschools.net). Paper applications are available in the school's front office upon request. Many students are approved through Direct Certification and do not submit a lunch application. If approved for meal benefits, the approval status is valid throughout the school year, the summer, and approximately the first twenty days of the next school year.

- **Meal Prices**

Breakfast	School Lunch	Prices
All Students No Charge	Elementary Students	\$ 2.25
Adults \$ 2.00	Middle/Secondary Students	\$ 2.50
	Reduced Price lunch, all grade levels	\$ 0.40
	Adults	\$ 3.00

- **PAYPAMS**

Miami-Dade County Public School's Department of Food and Nutrition allows parents/guardians the convenience to pay online for their child's meals with a credit or debit card at [paypams.com](http://paypams.com). Parents/guardians create an account in PayPams for the child, and will be able to access the following:

- a. view the account balance
- b. schedule automatic payments
- c. receive low-balance e-mail reminders
- d. view a report of daily spending and cafeteria purchases

- **Peanut Allergies/Peanut-Free School**

Parents/Guardians should notify the school principal of any allergy or other medical condition their child has and request the appropriate forms for completion.





# MIAMI-DADE COUNTY PUBLIC SCHOOL DISTRICT'S UNIVERSAL PARENT/STUDENT HANDBOOK

## **Mental Health Services**

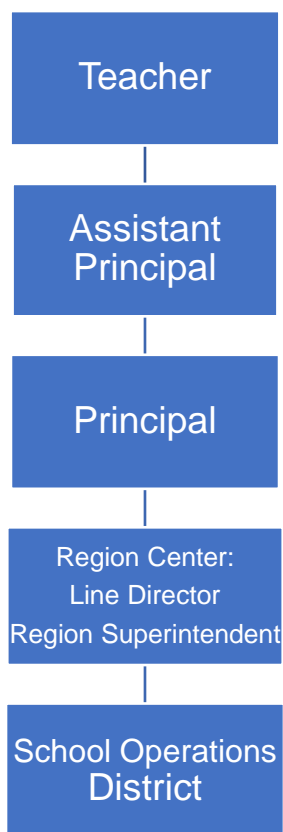
Miami-Dade County Public Schools established The Department of Mental Health Services to ensure the coordination of school and community resources and services to support the specific mental health needs of students. The programs in place provide prevention initiatives and also services for students with pre-existing mental health challenges. For assistance contact your child's school, the parent assistance line at (305) 995-7100 or visit <http://www.mentalhealthservices.dadeschools.net>.

## **Parent Toolkits**

Visit <http://toolkit.dadeschools.net> for back-to-school information. Please note, for the opening of 2020-2021 school year, the site will direct you to <http://reopening.dadeschools.net> for the most updated information.

## **Protocol for Addressing Parental Concerns**

Parents may generally address their complaints or concerns to the school administration, which may be followed by Region and District department review by appropriate. For issues involving an individual teacher or class, parent/guardian address their concerns to the following individuals in the order below.



# MIAMI-DADE COUNTY PUBLIC SCHOOL DISTRICT'S UNIVERSAL PARENT/STUDENT HANDBOOK

## **Public-Private Collaboration**

Requests for private instructional personnel to collaborate with public instructional personnel in the educational setting should be directed to the Principal for application of District procedures.

## **Recess**

Recess is supervised, unstructured playtime where children have choices, develop rules for play and release energy and stress. Recess will be conducted outdoors when weather permits. In the case of inclement weather, appropriate recess activities will be conducted indoors.

Schools shall provide at least 100 minutes of supervised, safe, and unstructured free-play recess each week for students in kindergarten through grade 5, so that there are at least 20 consecutive minutes of free-play recess per day.

## **Safety and Security**

- ***Emergency Operations Plan***

Student and employee safety is a primary concern of the Miami-Dade County Public School (M-DCPS) System. The Emergency Operations Plan (EOP) was created to provide school personnel with the necessary leadership skills and knowledge needed to respond to critical incidents or other related emergencies that may occur in our schools/community. All schools have a site-specific plan to address all types of critical incidents. These plans address the individual needs of the school and provide guidelines for devising methods for communicating with the staff, students, parents/guardians, and the media during a critical incident or an emergency. Some of the protective action procedures include emergency drills (active shooter, hostage, & bomb drills), , the evacuation of students/staff from the building(s), evacuation of the disabled and if necessary the relocation of students/staff from the school campus, lockdown procedures and holding/dismissing students during school and community emergencies. Some important tips for parents/guardians to remember during a Critical Incident are as follows:

- Remain calm;
- Monitor media outlets for updates and official messages from M-DCPS;
- Do not flood the school with telephone calls; and
- If the school is on lockdown, wait until the lockdown is lifted before going to the school.

All school administrators, Region Center Superintendents/Directors and all MDSPD Police officers have been adequately trained in the school EOP and are prepared to respond immediately during a critical incident or emergency to provide safety for all children.

BeSafe Anonymous Reporting System (Insert Flyer)

[http://hoover.dadeschools.net/portable\\_doc/68128\\_Be\\_Safe\\_Anonymous\\_Reporting\\_System\\_Flyer.pdf](http://hoover.dadeschools.net/portable_doc/68128_Be_Safe_Anonymous_Reporting_System_Flyer.pdf)

- ***Fire Drills***



## MIAMI-DADE COUNTY PUBLIC SCHOOL DISTRICT'S UNIVERSAL PARENT/STUDENT HANDBOOK

Ten fire drills will take place during the school year according to the Miami-Dade County Public Schools Policy and Emergency Procedures. At the sound of the emergency bell, students must stop what they are doing and follow the teacher's instructions. Students must clear the building promptly by the prescribed route. Any student who is in the hallway or the restroom at the sound of the emergency bell must proceed to the nearest exit and locate the teacher. Students, teachers and staff must remain outside the building until permission is given to re-enter.

- ***Emergency Drills***

Twenty-one emergency drills, to include one monthly active shooter drill and one hostage situation or bomb threat drill, will take place during the school year according to Florida Senate Bill 7026, also known as the Marjory Stoneman Douglas High School Public Safety Act. One additional active shooter drill must take place within the first 30 days of the opening of schools. All emergency drills shall be conducted in accordance with the appropriate corresponding situational response as outlined in the EOP and shall include developmentally appropriate and age-appropriate procedures.

- **Lockdown Procedures**

Lockdowns are utilized in response to an immediate threat posed to students and staff. Schools have successfully performed lockdowns in response to police activity adjacent to a facility and potential armed intruders onsite. Students, faculty and staff will comply with all the procedures outlined in the Miami-Dade Public Schools Critical Incident Response Plan and remain on lockdown until a school administrator and/or law enforcement makes an "All Clear" announcement.

- **Threat Assessments**

Miami-Dade County Public Schools (M-DCPS) has a mandated set of procedures for threat assessment. A threat assessment is a problem-solving approach to violence prevention that involves assessment and intervention with students who have threatened violence in some way. When a preliminary determination is made, by the school administrator or designee, that a student poses a threat of violence or physical harm to him/herself or others is known, a Threat Assessment Team (TAT) shall be notified and shall convene to determine the best course of action. Authorized members of the TAT may obtain criminal history record information, if applicable. Students determined to be at-risk for violence will be referred for mental health services. Threat assessment and disciplinary procedures are separate processes. Regardless of whether a threat is determined to be transient, serious substantive, or very serious substantive, appropriate disciplinary procedures shall be followed in accordance with the Code of Student Conduct.

- **Visitors**

Due to legal regulations, students are not permitted to have guests attend school with them at any time. Parents/guardians are always welcome, and tours may be arranged with the principal to view the school. Classroom visits require a request with 24-hour notice. All



# MIAMI-DADE COUNTY PUBLIC SCHOOL DISTRICT'S UNIVERSAL PARENT/STUDENT HANDBOOK

visitors must first register with security at the main entrance, sign-in, produce photo identification, and then proceed to register in the main office. Anyone who fails to follow these procedures will be considered a trespasser and is subject to arrest.

## **School Activities/Clubs**

All School Activities, clubs, and organizations must be approved by the principal and conform to the School Board Policies 5845 - Student Activities, 5830 - Student Fundraising and 9211 – Parent Organization, Booster Clubs, and Other Fund-Raising Activities.

- **Clubs**

Miami-Dade County Public Schools' students may participate in a wide variety of activities, including student council, subject-area clubs, honor societies, service clubs, school publications and class activities. School-sponsored clubs may be curriculum-related or noncurricular-related.

Curriculum-related clubs are student groups whose goals are an extension of the activities and objectives in a particular subject area within the school's curriculum. Conversely, noncurricular-related clubs are student groups whose goals are special interest oriented and not directly related to the curriculum. Meetings of noncurricular-related clubs may be scheduled only at times when instruction is not taking place, either before or after school.

### ***RMEC School Club List***

- **Amnesty International**
- **Band/Color Guard**
- **Chess and Board Club**
- **GSA**
- **Graphics Club**
- **Korean Club**
- **Marine Science Club**
- **Multimedia Club**
- **National Art Honor Society**
- **Spanish Club**
- **Student Voices**
- **Tri-M National Honor**
- **VIBE Dance Company**
- **Youth Crime Watch**



# MIAMI-DADE COUNTY PUBLIC SCHOOL DISTRICT'S UNIVERSAL PARENT/STUDENT HANDBOOK

## **School Center for Special Instructions (SCSI)**

School administrators may elect to assign students to the School Center for Special Instruction (SCSI) as an interim alternative educational setting to suspension from school. SCSI is designed to provide strategies and resources to students focused on learning new behavior skills. When misconduct in a class results in an assignment to SCSI, the student should be reassigned from only the class in which the misconduct occurred. Continued misconduct can result in the reassignment from all classes.

As an alternative to outdoor suspension, students will be assigned to SCSI by administration for violation of the Code of Student Conduct. Students assigned to SCSI for disciplinary reasons receive an excused absence from class and are responsible for completing work missed while there. Credit will be given for all work satisfactorily completed. More serious violations may be handled by assigning the student to The Student Success Center.

## **School Class Picture Process**

The school class picture monies will no longer be collected by school staff for this activity. Collection of monies will be conducted by the photographer and/or photographer's staff.

At no time, shall a staff member, parent, volunteer, or member of a school-allied organization such as the PTA handle school class picture monies.

## **School Transportation**

Miami-Dade County Public Schools will transport more than 60,000 students a day this school year, using a fleet of 1,300 buses on nearly 1100 school-bus routes. The service is for students who live more than two (2) miles from their assigned school and for students with special needs in some instances.

Before school begins, parents/guardians of all students eligible for bus transportation will receive a post card from the school district identifying the student's bus stop and times of pick-up and delivery. Information on student bus assignments will be posted on the Parent Portal at [www.dadeschools.net](http://www.dadeschools.net). The information on bus assignments on the Parent Portal is updated each night. Parents/guardians are encouraged to check the Parent Portal throughout the school year to obtain the most current information on their children's bus assignment.

Parents interested in determining their child's transportation eligibility should contact their child's school for information.

## **Special Education/Section 504**

The School Board of Miami-Dade County ensures that all students suspected of having a disability are identified, evaluated, and provided appropriate, specially designed instruction and related services, if it is determined that the student meets the state's eligibility criteria and the parent/guardian consents to initial placement.



## MIAMI-DADE COUNTY PUBLIC SCHOOL DISTRICT'S UNIVERSAL PARENT/STUDENT HANDBOOK

Students who are not eligible for specially designed instruction and related services in accordance with state eligibility categories but have a disability that substantially affects a major life activity may be eligible for accommodations pursuant to Section 504 of the Rehabilitation Act of 1973.

As the parent/guardian of a child with disabilities, you are a very important member of the team that plans your child's education. Be informed and get involved. If you have any questions, please contact your child's school. Staff from the special education department and your child's student service provider will help to answer your questions. Additional information may also be found at <http://ese.dadeschools.net/>.

### **Student Records**

The education records and personally identifiable information of students are protected by The Family Educational Rights and Privacy Act (FERPA) and the Florida Statutes. These laws provide that without the prior consent of the parent, guardian or eligible student, a student's records may not be released, except in accordance with the provisions listed in the above-cited laws. The laws provide certain exceptions to the prior consent requirement to the release of student records, which include, but are not limited to, school officials with a legitimate educational interest and lawfully issued subpoenas and court orders with notice prior to disclosure. Parents and eligible students are also provided the right to challenge the accuracy of their education records in accordance with the procedures outlined in School Board Policy 8330.

Each school must provide to the parent(s), guardian(s) or eligible student(s) an annual notice in writing of their right to inspect and review student records. Once a student reaches 18 years of age or is attending an institution of post-secondary education, the consent is required from the student only, unless the student qualifies as a dependent under the law.

### **Student Services**

The Division of Student Services provides prevention and intervention services to PK-Adult students throughout the District. These services focus on the elimination of social and emotional barriers that inhibit students' academic success and prepare students to be college and career ready. An integrated team of uniquely trained student services professionals deliver these direct services to students.

### **Student Success Centers**

The Student Success Centers provide an educational setting and safe-haven for referred students (ages 11 and older) exhibiting Level III-IV behavior and (with Region approval) habitual Level II infractions of the Code of Student Conduct.

### **The Parent Academy**

Miami-Dade County Public Schools created The Parent Academy to bridge the gap between home and school by connecting parents to valuable resources and information, which answers questions on topics that impact children's lives, including helping children learn, parenting skills, financial management, and health and wellness.



# MIAMI-DADE COUNTY PUBLIC SCHOOL DISTRICT'S UNIVERSAL PARENT/STUDENT HANDBOOK

The Parent Academy supports parents in becoming more involved in their children's education and empowers them to set and achieve personal empowerment goals for higher education and career advancement by providing free, year-round workshops, classes and events at schools, libraries, parks, colleges, private businesses and neighborhood centers across the county.

Parents can participate in workshops and classes that are aligned to their needs and convenient to their homes and workplaces. Upcoming events and workshop offerings are listed on The Parent Academy website at [parentacademymiami.com](http://parentacademymiami.com). For additional information, please call The Parent Academy at 305-995-2680 or The Department of Family Support Services at 305-271-8257.

## **Transgender and Gender Non-Conforming Students**

The School Board of Miami-Dade County has adopted comprehensive anti-discrimination and anti-bullying policies that require all students be treated with respect regardless of their unique characteristics, including sexual orientation or gender identity.<sup>1</sup> Every student has the right to learn in a safe and accepting school environment and schools have a responsibility to provide a safe and nondiscriminatory environment for all students, including transgender and gender nonconforming students.

These guidelines are intended to promote a positive, proactive approach that upholds and protects the rights of transgender and gender nonconforming students; and best practices to ensure that transgender students and gender nonconforming students have equitable access to all aspects of school life (academic, extracurricular and social) in ways that preserve and protect their dignity.

## **Verifications of Residency**

If verification is not provided or acceptable, the Superintendent may verify the student's residence.

Anyone who knowingly makes a false statement in writing with the intent to mislead a public servant in the performance of his/her official duty is guilty of a second-degree misdemeanor of the second degree under [F.S. 837.06](#). In addition, anyone who knowingly makes a false verified declaration is guilty of perjury, a third-degree felony under [F.S. 95.525](#).

## **Volunteer Program**

The School Volunteer Program is responsible for electronic registration, background checks and trainings of volunteers. There are two different levels of volunteerism.

Level 1 - complete a database background check	Level 2 - complete a fingerprint background check
•Day chaperones for field trips	•Certified Volunteers

---

<sup>1</sup> See School Board Policies 5517, *Anti-Discrimination/Harassment (Students)* and 5517.01, *Bullying and Harassment*.



## MIAMI-DADE COUNTY PUBLIC SCHOOL DISTRICT'S UNIVERSAL PARENT/STUDENT HANDBOOK

<ul style="list-style-type: none"><li>•Classroom assistants</li><li>•Math and/or reading tutors.</li></ul>	<ul style="list-style-type: none"><li>•Mentors</li><li>•Listeners</li><li>•Athletic/Physical Education assistants</li><li>•Overnight chaperones.</li></ul>
--	--

Any individual interested in volunteering in Miami-Dade County Public Schools must:

- Show a current valid government-issued identification with picture.
- Show a social security card (check name and number).
- Complete a background check.
- Upon clearance, attend an orientation at the school.





# MIAMI-DADE COUNTY PUBLIC SCHOOL DISTRICT'S UNIVERSAL PARENT/STUDENT HANDBOOK

## APPENDIX A – School Calendars



MIAMI-DADE COUNTY PUBLIC SCHOOLS  
2020-2021 SCHOOL CALENDAR  
ELEMENTARY AND SECONDARY  
REVISED 8/12/20

July 2020					August 2020					September 2020				
M	T	W	T	F	M	T	W	T	F	M	T	W	T	F
		1	2	<del>3</del>	3	4	5	6	7		1	2	3	4
6	7	8	9	10	10	11	<del>12</del>	<del>13</del>	<del>14</del>	<del>8</del>	8	9	10	11
13	14	15	16	17	<del>17</del>	<del>18</del>	19	20	21	14	15	16	17	18
20	21	22	23	24	24	25	26	27	28	21	22	23	24	25
27	28	29	30	31	31					28	29	30		
October 2020					November 2020					December 2020				
M	T	W	T	F	M	T	W	T	F	M	T	W	T	F
			1	2	2	3	4	5	6		1	2	3	4
5	6	7	8	9	9	10	<del>11</del>	12	13	7	8	9	10	11
12	13	14	15	16	16	17	18	19	20	14	15	16	17	18
19	20	21	22	23	23	24	25	<del>26</del>	<del>27</del>	<del>21</del>	<del>22</del>	<del>23</del>	<del>24</del>	<del>25</del>
26	27	28	29	30	30					<del>28</del>	<del>29</del>	<del>30</del>	<del>31</del>	
January 2021					February 2021					March 2021				
M	T	W	T	F	M	T	W	T	F	M	T	W	T	F
				<del>1</del>	1	2	3	4	5	1	2	3	4	5
4	5	6	7	8	8	9	10	11	12	8	9	10	11	12
11	12	13	14	15	<del>15</del>	16	17	18	19	15	16	17	18	19
<del>18</del>	19	20	21	22	22	23	24	25	26	22	23	24	25	26
25	26	27	28	29						<del>28</del>	<del>29</del>	<del>30</del>	<del>31</del>	
April 2021					May 2021					June 2021				
M	T	W	T	F	M	T	W	T	F	M	T	W	T	F
			<del>1</del>	<del>2</del>	3	4	5	6	7		1	2	3	4
5	6	7	8	9	10	11	12	13	14	7	8	9	10	11
12	13	14	15	16	17	18	19	20	21	14	15	16	17	18
19	20	21	22	23	24	25	26	27	28	21	22	23	24	25
26	27	28	29	30	<del>28</del>					28	29	30		

New Teachers Report  
 Teacher Planning Day  
 Teacher Planning Day - (No Opt)  
 District-wide Professional Development Day  
 Floating Teacher Planning Day (No Opt)

Recess Day  
 Beg/End of Grading Period  
 Legal Holiday  
 Available to opt  
 Teacher Planning Day available to opt

Days in Grading Period

1 - 37

2 - 49

3 - 43

4 - 46

For information on employee opt days, please refer to back of calendar.



# MIAMI-DADE COUNTY PUBLIC SCHOOL DISTRICT'S UNIVERSAL PARENT/STUDENT HANDBOOK

## MIAMI-DADE COUNTY PUBLIC SCHOOLS 2020-2021 SCHOOL CALENDAR ELEMENTARY AND SECONDARY MIAMI, FLORIDA

August 19, 2020	Teacher planning day; not available to opt; no students in school
August 20	Teacher planning day; District-wide Professional Development Day - not available to opt; no students in school
August 21	Teacher planning day; District-wide Professional Development Day - not available to opt; no students in school
August 24	Teacher planning day; District-wide Professional Development Day - not available to opt; no students in school
August 25	Teacher planning day; District-wide Professional Development Day - not available to opt; no students in school
August 26	Teacher planning day; District-wide Professional Development Day - not available to opt; no students in school
August 27	Teacher planning day; District-wide Professional Development Day - not available to opt; no students in school
August 28	Teacher planning day; not available to opt; no students in school
August 31	First Day of School; begin first semester
September 7	Labor Day; holiday for students and employees
September 28*+ #	Teacher planning day; no students in school
October 22	End first grading period; first semester
October 23	Teacher planning day; not available to opt; no students in school
October 26	Begin second grading period; first semester
November 3	Teacher planning day; District-wide Professional Development Day - not available to opt; no students in school
November 11	Observance of Veterans' Day; holiday for students and employees
November 25*+ #	Teacher planning day; no students in school
November 26	Thanksgiving; Board-approved holiday for students and employees
November 27	Recess Day
December 21-	Winter recess for students and employees with the exception of Fraternal Order of Police and select 12-month employees
January 1, 2021	Observance of Dr. Martin Luther King, Jr.'s Birthday; holiday for students and employees
January 18	End first semester and second grading period
January 22	Begin third grading period; second semester
January 25	All Presidents Day; holiday for students and employees
February 15	End third grading period; second semester
March 25	Teacher planning day; no students in school
March 26*+ #	Spring recess for students and employees with the exception of Fraternal Order of Police and select 12-month employees
March 29-	Begin fourth grading period; second semester
April 2	This day will be used as a floating planning day prior to returning to the traditional schoolhouse in Stage 2; not available to opt. Should M-DCPS not be able to transition to the traditional schoolhouse, May 28, 2021 will be a Teacher planning day available to opt.
April 5	Observance of Memorial Day; holiday for students and employees
May 28	Last Day of School; end fourth grading period; second semester
May 31	Teacher planning day; not available to opt; no students in school
June 9	
June 10	

NOTE: Every Wednesday students in elementary schools (Grades 2-5) and K-8 Centers (Grades 2-8) are released one (1) hour early

Job Category	Beginning Date	Ending Date
Teachers new to the system	August 12, 2020	June 10, 2021
Assistant Principals and 10-month clerical	August 12, 2020	June 17, 2021
Cafeteria Managers	August 14, 2020	June 10, 2021
Satellite Assistants	August 18, 2020	June 9, 2021
All Instructional Staff, Paraprofessionals & Security	August 19, 2020	June 10, 2021
Assistant to Cafeteria Managers/MAT Specialists	August 20, 2020	June 9, 2021
Cafeteria Workers (part-time)	August 24, 2020	June 9, 2021

\*Teachers/paraprofessionals and school support personnel may opt to work one or two days, August 17, 18, 2020, or June 11, 14, 2021, in lieu of any one or two of the following days: September 28, 2020, November 25, 2020, March 26, 2021. August 20, 21, 24, 25, 26, 27, 2020, and November 3, 2020 are District-wide Professional Development Days and are not available to opt. October 23, 2020 is a Teacher Planning Day not available to opt. May 28, 2021 is a Floating Teacher Planning Day prior to returning to the traditional schoolhouse in Stage 2; not available to opt. Should M-DCPS not be able to transition to the traditional schoolhouse, May 28, 2021 will be a Teacher planning day available to opt.

+Teachers new to Miami-Dade County Public Schools may opt to work one or two days, June 11, 14, 2021, in lieu of any one or two of the following days: September 28, 2020, November 25, 2020, March 26, 2021. August 20, 21, 24, 25, 26, 27, 2020, and November 3, 2020 are District-wide Professional Development Days and are not available to opt. October 23, 2020 is a Teacher Planning Day not available to opt. May 28, 2021 is a Floating Teacher Planning Day prior to returning to the traditional schoolhouse in Stage 2; not available to opt. Should M-DCPS not be able to transition to the traditional schoolhouse, May 28, 2021 will be a Teacher planning day available to opt.

#Ten-month secretarial and clerical employees may opt to work one or two days August 10, 11, 2020, or June 18, 21, 2021, in lieu of any one or two of the following days: September 28, 2020, November 25, 2020, March 26, 2021. August 20, 21, 24, 25, 26, 27, 2020, and November 3, 2020 are District-wide Professional Development Days and are not available to opt. October 23, 2020 is a Teacher Planning Day not available to opt. May 28, 2021 is a Floating Teacher Planning Day prior to returning to the traditional schoolhouse in Stage 2; not available to opt. Should M-DCPS not be able to transition to the traditional schoolhouse, May 28, 2021 will be a Teacher planning day available to opt.



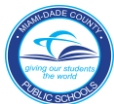
# MIAMI-DADE COUNTY PUBLIC SCHOOL DISTRICT'S UNIVERSAL PARENT/STUDENT HANDBOOK



## MIAMI-DADE COUNTY PUBLIC SCHOOLS 2020-2021 SCHOOL CALENDAR JUVENILE JUSTICE CENTER

<b>July 2020</b> <table> <tr><td>M</td><td>T</td><td>W</td><td>T</td><td>F</td></tr> <tr><td></td><td></td><td>1</td><td>2</td><td>3</td></tr> <tr><td>6</td><td>7</td><td>8</td><td>9</td><td>10</td></tr> <tr><td>13</td><td>14</td><td>15</td><td>16</td><td>17</td></tr> <tr><td>20</td><td>21</td><td>22</td><td>23</td><td>24</td></tr> <tr><td>27</td><td>28</td><td>29</td><td>30</td><td>31</td></tr> </table>	M	T	W	T	F			1	2	3	6	7	8	9	10	13	14	15	16	17	20	21	22	23	24	27	28	29	30	31	<b>August 2020</b> <table> <tr><td>M</td><td>T</td><td>W</td><td>T</td><td>F</td></tr> <tr><td>3</td><td>4</td><td>5</td><td>6</td><td>7</td></tr> <tr><td>10</td><td>11</td><td>12</td><td>13</td><td>14</td></tr> <tr><td>17</td><td>18</td><td>19</td><td>20</td><td>21</td></tr> <tr><td>24</td><td>25</td><td>26</td><td>27</td><td>28</td></tr> <tr><td>31</td><td></td><td></td><td></td><td></td></tr> </table>	M	T	W	T	F	3	4	5	6	7	10	11	12	13	14	17	18	19	20	21	24	25	26	27	28	31					<b>September 2020</b> <table> <tr><td>M</td><td>T</td><td>W</td><td>T</td><td>F</td></tr> <tr><td></td><td>1</td><td>2</td><td>3</td><td>4</td></tr> <tr><td>8</td><td>9</td><td>10</td><td>11</td><td>12</td></tr> <tr><td>14</td><td>15</td><td>16</td><td>17</td><td>18</td></tr> <tr><td>21</td><td>22</td><td>23</td><td>24</td><td>25</td></tr> <tr><td>28</td><td>29</td><td>30</td><td></td><td></td></tr> </table>	M	T	W	T	F		1	2	3	4	8	9	10	11	12	14	15	16	17	18	21	22	23	24	25	28	29	30		
M	T	W	T	F																																																																																								
		1	2	3																																																																																								
6	7	8	9	10																																																																																								
13	14	15	16	17																																																																																								
20	21	22	23	24																																																																																								
27	28	29	30	31																																																																																								
M	T	W	T	F																																																																																								
3	4	5	6	7																																																																																								
10	11	12	13	14																																																																																								
17	18	19	20	21																																																																																								
24	25	26	27	28																																																																																								
31																																																																																												
M	T	W	T	F																																																																																								
	1	2	3	4																																																																																								
8	9	10	11	12																																																																																								
14	15	16	17	18																																																																																								
21	22	23	24	25																																																																																								
28	29	30																																																																																										
<b>October 2020</b> <table> <tr><td>M</td><td>T</td><td>W</td><td>T</td><td>F</td></tr> <tr><td></td><td></td><td></td><td>1</td><td>2</td></tr> <tr><td>5</td><td>6</td><td>7</td><td>8</td><td>9</td></tr> <tr><td>12</td><td>13</td><td>14</td><td>15</td><td>16</td></tr> <tr><td>19</td><td>20</td><td>21</td><td>22</td><td>23</td></tr> <tr><td>26</td><td>27</td><td>28</td><td>29</td><td>30</td></tr> </table>	M	T	W	T	F				1	2	5	6	7	8	9	12	13	14	15	16	19	20	21	22	23	26	27	28	29	30	<b>November 2020</b> <table> <tr><td>M</td><td>T</td><td>W</td><td>T</td><td>F</td></tr> <tr><td>2</td><td>3</td><td>4</td><td>5</td><td>6</td></tr> <tr><td>9</td><td>10</td><td>11</td><td>12</td><td>13</td></tr> <tr><td>16</td><td>17</td><td>18</td><td>19</td><td>20</td></tr> <tr><td>23</td><td>24</td><td>25</td><td>26</td><td>27</td></tr> <tr><td>30</td><td></td><td></td><td></td><td></td></tr> </table>	M	T	W	T	F	2	3	4	5	6	9	10	11	12	13	16	17	18	19	20	23	24	25	26	27	30					<b>December 2020</b> <table> <tr><td>M</td><td>T</td><td>W</td><td>T</td><td>F</td></tr> <tr><td></td><td>1</td><td>2</td><td>3</td><td>4</td></tr> <tr><td>7</td><td>8</td><td>9</td><td>10</td><td>11</td></tr> <tr><td>14</td><td>15</td><td>16</td><td>17</td><td>18</td></tr> <tr><td>21</td><td>22</td><td>23</td><td>24</td><td>25</td></tr> <tr><td>28</td><td>29</td><td>30</td><td></td><td></td></tr> </table>	M	T	W	T	F		1	2	3	4	7	8	9	10	11	14	15	16	17	18	21	22	23	24	25	28	29	30		
M	T	W	T	F																																																																																								
			1	2																																																																																								
5	6	7	8	9																																																																																								
12	13	14	15	16																																																																																								
19	20	21	22	23																																																																																								
26	27	28	29	30																																																																																								
M	T	W	T	F																																																																																								
2	3	4	5	6																																																																																								
9	10	11	12	13																																																																																								
16	17	18	19	20																																																																																								
23	24	25	26	27																																																																																								
30																																																																																												
M	T	W	T	F																																																																																								
	1	2	3	4																																																																																								
7	8	9	10	11																																																																																								
14	15	16	17	18																																																																																								
21	22	23	24	25																																																																																								
28	29	30																																																																																										
<b>January 2021</b> <table> <tr><td>M</td><td>T</td><td>W</td><td>T</td><td>F</td></tr> <tr><td></td><td></td><td></td><td></td><td></td></tr> <tr><td>4</td><td>5</td><td>6</td><td>7</td><td>8</td></tr> <tr><td>11</td><td>12</td><td>13</td><td>14</td><td>15</td></tr> <tr><td>18</td><td>19</td><td>20</td><td>21</td><td>22</td></tr> <tr><td>25</td><td>26</td><td>27</td><td>28</td><td>29</td></tr> </table>	M	T	W	T	F						4	5	6	7	8	11	12	13	14	15	18	19	20	21	22	25	26	27	28	29	<b>February 2021</b> <table> <tr><td>M</td><td>T</td><td>W</td><td>T</td><td>F</td></tr> <tr><td>1</td><td>2</td><td>3</td><td>4</td><td>5</td></tr> <tr><td>8</td><td>9</td><td>10</td><td>11</td><td>12</td></tr> <tr><td>15</td><td>16</td><td>17</td><td>18</td><td>19</td></tr> <tr><td>22</td><td>23</td><td>24</td><td>25</td><td>26</td></tr> <tr><td></td><td></td><td></td><td></td><td></td></tr> </table>	M	T	W	T	F	1	2	3	4	5	8	9	10	11	12	15	16	17	18	19	22	23	24	25	26						<b>March 2021</b> <table> <tr><td>M</td><td>T</td><td>W</td><td>T</td><td>F</td></tr> <tr><td></td><td></td><td></td><td></td><td></td></tr> <tr><td>8</td><td>9</td><td>10</td><td>11</td><td>12</td></tr> <tr><td>15</td><td>16</td><td>17</td><td>18</td><td>19</td></tr> <tr><td>22</td><td>23</td><td>24</td><td>25</td><td>26</td></tr> <tr><td></td><td></td><td></td><td></td><td></td></tr> </table>	M	T	W	T	F						8	9	10	11	12	15	16	17	18	19	22	23	24	25	26					
M	T	W	T	F																																																																																								
4	5	6	7	8																																																																																								
11	12	13	14	15																																																																																								
18	19	20	21	22																																																																																								
25	26	27	28	29																																																																																								
M	T	W	T	F																																																																																								
1	2	3	4	5																																																																																								
8	9	10	11	12																																																																																								
15	16	17	18	19																																																																																								
22	23	24	25	26																																																																																								
M	T	W	T	F																																																																																								
8	9	10	11	12																																																																																								
15	16	17	18	19																																																																																								
22	23	24	25	26																																																																																								
<b>April 2021</b> <table> <tr><td>M</td><td>T</td><td>W</td><td>T</td><td>F</td></tr> <tr><td></td><td></td><td></td><td></td><td></td></tr> <tr><td>5</td><td>6</td><td>7</td><td>8</td><td>9</td></tr> <tr><td>12</td><td>13</td><td>14</td><td>15</td><td>16</td></tr> <tr><td>19</td><td>20</td><td>21</td><td>22</td><td>23</td></tr> <tr><td>26</td><td>27</td><td>28</td><td>29</td><td>30</td></tr> </table>	M	T	W	T	F						5	6	7	8	9	12	13	14	15	16	19	20	21	22	23	26	27	28	29	30	<b>May 2021</b> <table> <tr><td>M</td><td>T</td><td>W</td><td>T</td><td>F</td></tr> <tr><td>3</td><td>4</td><td>5</td><td>6</td><td>7</td></tr> <tr><td>10</td><td>11</td><td>12</td><td>13</td><td>14</td></tr> <tr><td>17</td><td>18</td><td>19</td><td>20</td><td>21</td></tr> <tr><td>24</td><td>25</td><td>26</td><td>27</td><td>28</td></tr> <tr><td></td><td></td><td></td><td></td><td></td></tr> </table>	M	T	W	T	F	3	4	5	6	7	10	11	12	13	14	17	18	19	20	21	24	25	26	27	28						<b>June 2021</b> <table> <tr><td>M</td><td>T</td><td>W</td><td>T</td><td>F</td></tr> <tr><td></td><td></td><td></td><td></td><td></td></tr> <tr><td>7</td><td>8</td><td>9</td><td>10</td><td>11</td></tr> <tr><td>14</td><td>15</td><td>16</td><td>17</td><td>18</td></tr> <tr><td>21</td><td>22</td><td>23</td><td>24</td><td>25</td></tr> <tr><td>28</td><td>29</td><td>30</td><td></td><td></td></tr> </table>	M	T	W	T	F						7	8	9	10	11	14	15	16	17	18	21	22	23	24	25	28	29	30		
M	T	W	T	F																																																																																								
5	6	7	8	9																																																																																								
12	13	14	15	16																																																																																								
19	20	21	22	23																																																																																								
26	27	28	29	30																																																																																								
M	T	W	T	F																																																																																								
3	4	5	6	7																																																																																								
10	11	12	13	14																																																																																								
17	18	19	20	21																																																																																								
24	25	26	27	28																																																																																								
M	T	W	T	F																																																																																								
7	8	9	10	11																																																																																								
14	15	16	17	18																																																																																								
21	22	23	24	25																																																																																								
28	29	30																																																																																										
<b>July 2021</b> <table> <tr><td>M</td><td>T</td><td>W</td><td>T</td><td>F</td></tr> <tr><td></td><td></td><td></td><td>1</td><td>2</td></tr> <tr><td>5</td><td>6</td><td>7</td><td>8</td><td>9</td></tr> <tr><td>12</td><td>13</td><td>14</td><td>15</td><td>16</td></tr> <tr><td>19</td><td>20</td><td>21</td><td>22</td><td>23</td></tr> <tr><td>26</td><td>27</td><td>28</td><td>29</td><td>30</td></tr> </table>	M	T	W	T	F				1	2	5	6	7	8	9	12	13	14	15	16	19	20	21	22	23	26	27	28	29	30	<div> <div> <div>Teacher Planning Day</div> <div>Teacher Planning Day - District-wide</div> <div>Professional Development Day (No Opt)</div> <div>Legal Holiday</div> </div> <div> <div>Recess Day</div> <div>Beg/End of Grading Period</div> <div>Saturday Classes</div> <div>Available to opt</div> </div> </div>	<b>Days in Grading Period</b> <table> <tr><td>1 - 30</td><td>4 - 50</td></tr> <tr><td>2 - 48</td><td>5 - 34</td></tr> <tr><td>3 - 48</td><td>6 - 30</td></tr> </table>	1 - 30	4 - 50	2 - 48	5 - 34	3 - 48	6 - 30																																																						
M	T	W	T	F																																																																																								
			1	2																																																																																								
5	6	7	8	9																																																																																								
12	13	14	15	16																																																																																								
19	20	21	22	23																																																																																								
26	27	28	29	30																																																																																								
1 - 30	4 - 50																																																																																											
2 - 48	5 - 34																																																																																											
3 - 48	6 - 30																																																																																											

For information on employee opt days, please refer to back of calendar.



# MIAMI-DADE COUNTY PUBLIC SCHOOL DISTRICT'S UNIVERSAL PARENT/STUDENT HANDBOOK

## MIAMI-DADE COUNTY PUBLIC SCHOOLS 2020-2021 SCHOOL CALENDAR JUVENILE JUSTICE EDUCATION

July 1, 2020	No compensation, available to opt
July 2	Teacher planning day; no students in school
July 6	Begin Summer grading period
August 14	End Summer grading period
August 17	Begin first grading period, first semester
August 19	Teacher planning day; not available to opt; no students in school
August 20	Teacher planning day; District-wide Professional Development Day – not available to opt; no students in school
August 21	Teacher planning day; not available to opt; no students in school
August 29	Saturday classes
September 7	Labor Day; holiday for students and employees
September 12	Saturday classes
September 26	Saturday classes
September 28*	Teacher planning day; no students in school
October 10	Saturday classes
October 22	End of First grading period, first semester
October 23*	Teacher planning day; no students in school
October 26	Begin second grading period, first semester
October 31	Saturday classes
November 3	Teacher planning day; District-wide Professional Development Day – not available to opt; no students in school
November 11	Observance of Veterans' Day; holiday for students and employees
November 14	Saturday classes
November 25*	Teacher planning day; no students in school
November 26	Thanksgiving; Board-approved holiday for students and employees
November 27	Recess day
December 12	Saturday classes
December 21-	Winter recess for students and employees with the exception of Fraternal Order of Police and
January 1, 2021	select 12-month employees
January 9	Saturday classes
January 14	End second grading period; first semester
January 15	Begin third grading period; second semester
January 18	Observance of Dr. Martin Luther King, Jr.'s Birthday; holiday for students and employees
January 22*	Teacher planning day; no students in school
February 6	Saturday classes
February 15	All Presidents' Day; holiday for students and employees
February 20	Saturday classes
March 13	Saturday classes
March 25	End third grading period; second semester
March 26*	Teacher planning day; no students in school
March 29-	Spring recess for students and employees with the exception of Fraternal Order of Police and
April 2	select 12-month employees
April 5	Begin fourth grading period; second semester
April 17	Saturday classes
May 8	Saturday classes
May 18	End fourth grading period; second semester
May 19	Begin fifth grading period
May 22	Saturday classes
May 31	Observance of Memorial Day; holiday for students and employees
June 5	Saturday classes
June 28	End of fifth grading period
June 29	Teacher planning day; not available to opt; no students in school

**\*Teachers/paraprofessionals, school support personnel, and 10-month secretarial/clerical employees** may opt to work one or two days, (refer to memorandum RE: 2020-2021 OPT DAYS DJJ SCHOOLS), July 1, 2020, in lieu of any one, two or three of the following days: September 28, 2020, October 23, 2020, November 25, 2020, January 22, 2021, March 26, 2021. August 20, 2020 and November 3, 2020 are District-wide Professional Development Days and are not available to opt.



# MIAMI-DADE COUNTY PUBLIC SCHOOL DISTRICT'S UNIVERSAL PARENT/STUDENT HANDBOOK



## MIAMI-DADE COUNTY PUBLIC SCHOOLS 2020-2021 SCHOOL CALENDAR ADULT/VOCATIONAL EDUCATION

<b>August 2020</b>					<b>September 2020</b>					<b>October 2020</b>				
M	T	W	T	F	M	T	W	T	F	M	T	W	T	F
3	4	5	6	7		1	2	3	4				1	2
10	11	12	13	14	8	9	10	11		5	6	7	8	9
17	18	19	20	21	14	15	16	17	18	12	13	14	15	16
24	25	26	27	28	21	22	23	24	25	19	20	21	22	23
31					28	29	30			26	27	28	29	30
<b>November 2020</b>					<b>December 2020</b>					<b>January 2021</b>				
M	T	W	T	F	M	T	W	T	F	M	T	W	T	F
2	3	4	5	6		1	2	3	4					
9	10	11	12	13	7	8	9	10	11	4	5	6	7	8
16	17	18	19	20	14	15	16	17	18	11	12	13	14	15
23	24	25	26	27						18	19	20	21	22
30										25	26	27	28	29
<b>February 2021</b>					<b>March 2021</b>					<b>April 2021</b>				
M	T	W	T	F	M	T	W	T	F	M	T	W	T	F
1	2	3	4	5	1	2	3	4	5					
8	9	10	11	12	8	9	10	11	12	5	6	7	8	9
15	16	17	18	19	15	16	17	18	19	12	13	14	15	16
22	23	24	25	26	22	23	24	25	26	19	20	21	22	23
										26	27	28	29	30
<b>May 2021</b>					<b>June 2021</b>					<b>July 2021</b>				
M	T	W	T	F	M	T	W	T	F	M	T	W	T	F
3	4	5	6	7		1	2	3	4				1	2
10	11	12	13	14	7	8	9	10	11	6	7	8	9	
17	18	19	20	21	14	15	16	17	18	12	13	14	15	16
24	25	26	27	28	21	22	23	24	25	19	20	21	22	23
					28	29	30			26	27	28	29	30
<b>August 2021</b>														
M	T	W	T	F										
2	3	4	5	6										
9	10	11	12	13										
16	17	18	19	20										
23	24	25	26	27										
30	31													

	New Teachers Report	<input type="checkbox"/>	Available to opt
	Teacher Planning Day		
	Teacher Planning Day - (No Opt)		
	District-wide Professional Development		
	Recess Day		
	Begin/End of Grading Period		
	Legal Holiday		

Days in Grading Period	
1 - 77	
2 - 61	
3 - 78	

For information on employee opt days, please refer to back of calendar.



# MIAMI-DADE COUNTY PUBLIC SCHOOL DISTRICT'S UNIVERSAL PARENT/STUDENT HANDBOOK

## MIAMI-DADE COUNTY PUBLIC SCHOOLS 2020-2021 SCHOOL CALENDAR ADULT/VOCATIONAL EDUCATION

HOLIDAYS 2020	
September 7	Labor Day
November 11	Veterans' Day
November 26	Thanksgiving Day

HOLIDAYS 2021	
January 18	Observance of Dr. Martin Luther King, Jr.'s Birthday
February 15	All Presidents' Day
May 31	Observance of Memorial Day
July 5	Fourth of July

Number of School Days in TRIMESTER 1					Number of School Days in TRIMESTER 2				Number of School Days in TRIMESTER 3				
Aug	Sept	Oct	Nov	Dec	Jan	Feb	Mar	Apr	Apr	May	June	July	Aug
6	20	21	16	14	18	19	19	5	15	20	21	20	2
TOTAL: 77					TOTAL: 61				TOTAL: 78				
TOTAL TRIMESTER DAYS STUDENTS ARE IN SCHOOL = 216													

\*Teachers may opt to work one or two days, August 17, 18, 2020, or August 5, 6, 2021, in lieu of any of the teacher planning days except August 19, 2020, August 21, 2020 and the designated District-wide Professional Development Days, August 20, 2020 and November 3, 2020. Also, at the discretion of the principal, teachers may opt to conduct classes on a teacher planning day in lieu of a regularly scheduled class day during those times when special events and activities scheduled by the day school program disrupt on-campus adult education programs.

\*\*August 4, 2021 is a Teacher planning day; not available to opt.





# MIAMI-DADE COUNTY PUBLIC SCHOOL DISTRICT'S UNIVERSAL PARENT/STUDENT HANDBOOK

## **APPENDIX B – Florida Statutes and School Board Policies**

**View all School Board Policies at: [School Board Bylaws & Policies](#)**

### **Academics**

- **2235 - MUSIC, ART, AND PHYSICAL EDUCATION**
  - Music, art, and physical education are fundamental subjects in the school's curriculum because they contribute to every child's academic and social development. Art and Music education helps level the "learning field" across socio-economic boundaries while strengthening student problem-solving and critical thinking skills and contributing to the overall academic achievement of students.
- **2240 - CONTROVERSIAL ISSUES AND STUDENT EXPRESSION**
  - Students are encouraged to participate in discussions, speeches, and other expressions in which many points of view, including those that are controversial, are freely explored. A controversial issue is a topic on which opposing points of view have been promulgated by responsible opinion or likely to arouse both support and opposition in the community.
- **2370.01 – VIRTUAL INSTRUCTION**
  - The enrollment period for the District-operated full-time virtual instruction program, Miami-Dade Online Academy, opens in the spring of each school year for a minimum of ninety days and closes thirty days before the first day of the school year.
- **2416 – STUDENT PRIVACY AND PARENTAL ACCESS TO INFORMATION**
  - Additionally, parents have the right to inspect, upon request, any instructional material used as part of the educational curriculum of the student and within a reasonable period of time after the request is received by the building principal. "Instructional material" means instructional content that is provided to a student, regardless of its format, including printed and representational materials, audio-visual materials, and materials in electronic or digital formats (such as materials accessible through the Internet). The term does not include academic tests or assessments.
- **2421 - K-12 CAREER-TECHNICAL EDUCATION PROGRAM**
  - Career-technical education is designed to provide career and technical education experiences. These experiences will complement and reinforce academic concepts that are particularly amenable to contextualized learning in a distinct career area and provide occupationally specific skills.



# MIAMI-DADE COUNTY PUBLIC SCHOOL DISTRICT'S UNIVERSAL PARENT/STUDENT HANDBOOK

- 2440 - SUMMER SCHOOL

- The School Board may conduct a summer program of academic instruction for students in grades K-12 and Special Education (SPED) students needing extended school year services as identified in their Individual Education Plan (I.E.P.). The School Board may also choose to implement summer enhancement programs, contingent upon available funding. The School Board shall provide transportation for full-time SPED students and other students as appropriate.

- 2510 - INSTRUCTIONAL MATERIALS AND RESOURCES

- The District shall maintain on its website a current list of instructional materials, by grade level, purchased by the District. This list can be accessed at <http://im.dadeschools.net/>.

- 2623 - STUDENT ASSESSMENT

- Student assessment shall comply with the law and State Board of Education rules to determine the progress of students and to assist them in attaining student performance objectives and the educational achievement goals of the District.
- State-mandated tests (e.g., diagnostic assessments and achievement tests) shall be administered to all eligible students at the times designated by the State Board of Education.
- Administrative procedures for test security and confidentiality of student results are in place to maintain the integrity of District and State assessments.

- 5410 - STUDENT PROGRESSION PLAN

- Provides guidance to teachers, school and district administrators, parents and other stakeholders regarding the requirements and procedures for students to progress from one grade to the next, Kindergarten through grade 12 and Adult Education. The information presented in the document is derived from requirements set forth by Florida Statutes, State Board of Education Rules and policies established by The School Board of Miami-Dade County.

## **Accident Reports/Incident Reports/School Safety**

- 3213 - STUDENT SUPERVISION AND WELFARE

- Protecting the physical and emotional well-being of students is of paramount importance. Each instructional staff member shall maintain the highest professional, moral, and ethical standards in dealing with the supervision, control, and protection of students on or off school property

- 5540 - INVESTIGATIONS INVOLVING STUDENTS

- School administrators shall respond to incidents involving students occurring on school grounds or at school-sponsored events. When conducting an initial fact inquiry, if an administrator suspects that a crime has been committed, they must





# MIAMI-DADE COUNTY PUBLIC SCHOOL DISTRICT'S UNIVERSAL PARENT/STUDENT HANDBOOK

report the matter to School Police or another appropriate law enforcement agency to assume the investigative responsibilities.

- 5772 - WEAPONS

- Students are prohibited from possessing, storing, making, or using a weapon, including a concealed weapon, in a school safety zone and any setting that is under the control and supervision of the School Board for the purpose of school activities approved and authorized by the School Board including, but not limited to, property leased, owned, or contracted for by the School Board, a school-sponsored event, or in a School Board-owned vehicle.

- 7217 - WEAPONS

- Visitors are prohibited from possessing, storing, making, or using a weapon, including a concealed weapon, in a school safety zone and any setting that is under the control and supervision of the School Board for the purpose of school activities approved and authorized by the School Board including, but not limited to, property leased, owned, or contracted for by the School Board, a school-sponsored event, or in a School Board-owned vehicle.

- 8405 - SCHOOL SAFETY

- The School Board is committed to maintaining a safe and drug-free environment in all of the District's schools. School crime and violence are multifaceted problems that need to be addressed in a manner that utilizes all available resources in the community through a coordinated effort of School District personnel, law enforcement agencies, and families. School administrators and local law enforcement officials must work together to provide for the safety and welfare of students while they are at school or a school-related event or are on their way to and from school.

- 8410 – EMERGENCY MANAGEMENT, PREPAREDNESS, AND RESPONSE

- The District Critical Incident Response Team (DCIRT) is responsible for assisting schools with emergencies/critical incidents as needed and coordinate District resources.

- FLORIDA STATUTES, SECTION 943.082 – SCHOOL SAFETY AWARENESS PROGRAM

- FortifyFL is a suspicious activity reporting tool that allows users to instantly relay information to appropriate law enforcement agencies and school officials. FortifyFL was created and funded by the 2018 Florida Legislature as part of the Marjory Stoneman Douglas High School Public Safety Act. It is available for free download from the Apple App Store and Google Play Store. It may also be accessed from the Dadeschools.net homepage, as well as the student, parent, and



# MIAMI-DADE COUNTY PUBLIC SCHOOL DISTRICT'S UNIVERSAL PARENT/STUDENT HANDBOOK

employee portal pages. A link to FortifyFI has also been placed on each school site information page.

## **Admission, Registration and Immunization Requirements**

- **5112 - ENTRANCE REQUIREMENTS**

- Establishes the admission and registration requirements for students entering school. The following documents and forms are to be provided upon initial registration:
  - Original birth certificate
  - Verification of age and legal name
  - Proof of a physical examination by an approved health care provider including a tuberculosis clinical screening, appropriate follow-up, and a certificate of immunization
  - Two (2) verification of parent/legal current residence (address)

- **5114 - FOREIGN STUDENTS**

- Entry requirements into schools are the same for all students, regardless of country of birth and immigration status. All students will register at the school of the actual residence of the parent in the attendance area as approved by the School Board.

- **5320 – IMMUNIZATION**

- All students shall be immunized against polio, measles-mumps-rubella (MMR) diphtheria, pertussis tetanus (DTaP), hepatitis B, and varicella (chicken pox). Student's with a documented history of the varicella (chicken pox) disease are not required to receive the varicella vaccine. This policy applies to students who currently attend school in the District and those eligible to attend.
- A student who has not completed the required immunization will not be admitted to school.
- Students may receive the Haemophilus Influenzae vaccine during school hours for free. Parents/Guardians MUST provide consent. Parents/guardians should contact their child's school to determine when the flu vaccine will be offered at their child's school.

## **Animals on District Property**

- **8390 - ANIMALS ON DISTRICT PROPERTY**

- Service animals as required by law are permitted in schools. "Service animals" pursuant to 28 C.F.R. 35.104, means any dog that is individually trained to do work or perform tasks for the benefit of an individual with a disability, including a physical, sensory, psychiatric, intellectual, or other mental disability.
- All animals, including service animals, housed on District property or brought on District property on a regular basis must meet every State and County veterinary requirement, including but not limited to, rabies vaccination or other inoculations required to be properly licensed.



# MIAMI-DADE COUNTY PUBLIC SCHOOL DISTRICT'S UNIVERSAL PARENT/STUDENT HANDBOOK

- Students are not allowed to bring pets to school.

## Anti-Discrimination Policy

- 5517 – ANTI-DISCRIMINATION/HARASSMENT (STUDENTS)

- The School Board shall comply with all Federal laws and regulations prohibiting discrimination/harassment based on sex, race, color, ethnic or national origin, religion, marital status, disability, age, political beliefs, sexual orientation, gender, gender identification, social and family background, linguistic preference, pregnancy, and any other basis prohibited by law and all requirements and regulations of the U.S. Department of Education. The School Board will enforce its prohibition against such discrimination/harassment against students in accordance with School Board Policies 5517, 5517.02 and 5517.03. This policy prohibits discrimination and harassment at all School District operations, programs, and activities on school property, or at another location if it occurs during an activity sponsored by the School Board.

- 5517.01 – BULLYING AND HARASSMENT

- The School Board is committed to providing a safe learning environment for all students and shall strive to eradicate bullying and harassment in its schools, with bullying defined as systematically and chronically inflicting physical harm or psychological distress on one or more students.
- The School Board is committed to providing awareness, prevention, and education in promoting a school atmosphere in which bullying, harassment, and intimidation will not be tolerated by students, School Board employees, visitors, or volunteers.
- This policy provides the steps to individual complaints of bullying and harassment and the process for addressing the complaints.

- 5517.02 - DISCRIMINATION/HARASSMENT COMPLAINT PROCEDURES FOR STUDENTS

- Students and parents are encouraged to promptly report complaints of discriminatory or harassing conduct to their Principal. Additionally, they may file the complaint directly with the Region Office or the District's Office of Civil Rights Compliance (CRC).
- All complaints involving student to student harassment, except sexual harassment, will be first investigated at the school site. If such complaints are made directly to the District Office, the Region Office or the CRC Office, they will be referred to the school site for the initial investigation. Complaints including sexual harassment of a student will be investigated by the CRC Office with support from school.
- This policy provides the steps to individual complaints of discrimination and harassment based on protected categories and the process for addressing the complaints.



# MIAMI-DADE COUNTY PUBLIC SCHOOL DISTRICT'S UNIVERSAL PARENT/STUDENT HANDBOOK

## **Attendance Policy/School Hours**

- 5200 – ATTENDANCE
  - Student attendance is a means of improving student performance and critical in raising student achievement. Together, the staff of Miami-Dade County Public Schools, students, parents and the community must make every effort to lessen the loss of instructional time to students.
- 5225 - ABSENCES FOR RELIGIOUS HOLIDAYS
  - Student absences for religious purposes, as identified on the approved holidays listed in the Student Attendance Reporting Procedures PK-12 Handbook, may not prohibit students from receiving attendance awards or other attendance incentives at the school level, region level, or District level.
- 5230 - LATE ARRIVAL AND EARLY DISMISSAL
  - Students shall be in attendance throughout the school day. If a student will be late to school or dismissed before the end of the school day, the parent shall notify the school in advance and state the reason for the tardiness or early dismissal. Justifiable reasons shall be determined by the principal. Students will be counted absent if they are not present in class for at least half of the class period. To be counted "present" for the day, the student must be in attendance for a minimum of two hours of the day unless extenuating circumstances exist.
  - The parent – and in the case of divorced or separated parents, the enrolling parent shall indicate on the Emergency Student Data Form the individual(s) to whom the student may be released during the school day.
- 8220 - SCHOOL DAY
  - The Superintendent shall annually establish the hours of the school day. The Superintendent may authorize exceptions from the regular school day.
  - The Superintendent may close the schools, delay the opening of school, or dismiss school early when such alteration in the regular session is required for the protection of the health and safety of students and staff members.

## **Ceremonies & Observances**

- 8800 - RELIGIOUS/PATRIOTIC CEREMONIES AND OBSERVANCES
  - Acknowledgement of, explanation of, and teaching about religious holidays of various religions is permitted. Celebration activities involving nonreligious decorations and use of secular works are permitted, but it is the responsibility of all faculty members to ensure that such activities are strictly voluntary, do not place an atmosphere of social compulsion or ostracism on minority groups or individuals, and do not interfere with the regular school program.

## **Class Size**



# MIAMI-DADE COUNTY PUBLIC SCHOOL DISTRICT'S UNIVERSAL PARENT/STUDENT HANDBOOK

- CLASS SIZE STATE STATUTE

- Florida citizens approved an amendment that set limits on the number of students in core academic classes in public schools. The amendment requires classes to be in compliance at the class level. However, pursuant to language passed by the 2013 Florida Legislature in HB 7009 and subsequently approved by the Governor, amending Florida Statute 1002.31, Public School Parental Choice, the calculation for compliance with class size limits pursuant to Florida Statute 1003.03 for a school or program that is a public school of choice is measured by the average number of students at the school level.

## Clinic

- 5330 – USE OF MEDICATIONS

- The School Board shall not be responsible for the diagnosis and treatment of student illness. The administration of prescribed medication and/or medically-prescribed treatments to a student during school hours will be permitted only when failure to do so would jeopardize the health of the student, the student would not be able to attend school if the medication or treatment were not made available during school hours, or the child is disabled and requires medication to benefit from his/her educational program.

## Code of Student Conduct

- 2451 - ALTERNATIVE SCHOOL PROGRAMS

- The Superintendent may provide alternative education programs for students who, in the opinion of the Superintendent, will benefit from this educational option. Participation in an alternative program does not exempt the student from complying with school attendance rules or the Code of Conduct.

- 5136.02 - SEXTING

- Sexting is the act of sending or forwarding through cellular telephones and other electronic media sexually explicit, nude, or partially nude photographs/images. [add something about disciplinary measures] It is the District's mission to ensure the social, physical, psychological, and academic well-being of all students. The educational purposes of the schools are best accomplished in a climate of student behavior that is socially acceptable and conducive to the learning and teaching process.

- 5500 - STUDENT CONDUCT AND DISCIPLINE

- The Code of Student Conduct (COSC) is aligned to local, state, and federal mandates with an emphasis on promoting a safe learning environment to ensure academic success. The Code of Student Conduct sets the standards of conduct expected of students in a purposeful safe learning environment which the principles of care, courtesy, civility, fairness, acceptance of diversity, and respect for the rights of others is valued. It also addresses the role of the



# MIAMI-DADE COUNTY PUBLIC SCHOOL DISTRICT'S UNIVERSAL PARENT/STUDENT HANDBOOK

parents/guardians, the students, and school, but also focuses on core values and model student behavior, rights and responsibilities of students, addressing student behavior, and disciplinary procedures.

- Furthermore, it should also be noted that behaviors committed on or off the school campus may be violations of the COSC and may also be violations of Florida law. These violations may result in disciplinary actions imposed by local law enforcement authorities, in addition to those of the school/district. The Superintendent, principals, and other administrators shall assign discipline/corrective strategies to students, including assignment to an interim alternative educational setting pursuant to the Code of Student Conduct and, in accordance with the student's due process rights.

- 5511 - DRESS CODE AND SCHOOL UNIFORMS

- Students are expected to come to school with proper attention having been given to personal cleanliness, grooming, and neatness of dress. Students whose personal attire or grooming distracts the attention of other students or teachers from their schoolwork shall be required to make the necessary alterations to such attire or grooming before entering the classroom or be sent home by the principal to be properly prepared for school. Students who fail to meet the minimum acceptable standards of cleanliness and neatness as determined by the principal and as specified in this policy shall be subject to appropriate disciplinary measures.

## Digital Conversion/Social Media

- 7540.03 - STUDENT RESPONSIBLE USE OF TECHNOLOGY, SOCIAL MEDIA, AND DISTRICT NETWORK SYSTEMS

- The School Board provides students access to a large variety of technology and network resources which provide multiple opportunities to enhance learning and improve communication within the school district and the community. All users must, however, exercise appropriate and responsible use of school and District technology and information systems. Users include anyone authorized by administration to use the network. This policy is intended to promote the most effective, safe, productive, and instructionally sound uses of network information and communication tools.

## Equal Opportunity

- 2260 - NONDISCRIMINATION AND ACCESS TO EQUAL EDUCATIONAL OPPORTUNITY

- The School Board shall provide equal opportunity for all students and will not discriminate or tolerate harassment in its educational programs or activities on any basis prohibited by law or School Board Policy.

- 5111.01 - HOMELESS STUDENTS



## MIAMI-DADE COUNTY PUBLIC SCHOOL DISTRICT'S UNIVERSAL PARENT/STUDENT HANDBOOK

- The District Project UP-START program serves children and youth who are identified as meeting the Federal definition of "homeless". Homeless children and youth, including those who are not currently enrolled in school due to homelessness, shall have equal access to the same free appropriate public education (FAPE) in public schools and preschool education programs in the same manner as all other District students.
- Additionally, homeless students shall have access to other services needed to ensure an opportunity to meet the same challenging State academic standards to which all students are held and to fully participate in the District's academic and extra-curricular activities for which they meet relevant eligibility criteria. To that end, homeless students shall not be stigmatized or segregated on the basis of their status as homeless.

### **Fieldtrips/School Social Events**

- 2340 - FIELD AND OTHER DISTRICT-SPONSORED TRIPS
  - Field trips should supplement and enrich classroom procedures by providing learning experiences in an environment outside the schools, arouse new interests among students, help students relate school experiences to the reality of the world outside of school, bring the resources of the community - natural, artistic, industrial, commercial, governmental, educational - within the student's learning experience, and afford students the opportunity to study real things and real processes in their actual environment.
  - Other District-sponsored trips are defined as any planned, student-travel activity approved as part of the District's total educational program and is under the direct supervision and control of an instructional staff member or any advisor designated by the Superintendent.
- 5850 - SCHOOL SOCIAL EVENTS
  - School facilities and appropriate staff will be made available for social events approved by the principal within and outside school facilities.
- 8640 - TRANSPORTATION FOR FIELD AND OTHER DISTRICT-SPONSORED TRIPS
  - Regular or special-purpose school vehicles shall be used for transportation on field and other District-sponsored trips.

### **Financial Obligations**

- 6152 - STUDENT FEES
  - The School Board may levy certain charges to students to facilitate the utilization of adequate, appropriate learning materials used in the course of instruction.

### **Food & Nutrition/Wellness Policy**

- 8500 - FOOD SERVICES





## MIAMI-DADE COUNTY PUBLIC SCHOOL DISTRICT'S UNIVERSAL PARENT/STUDENT HANDBOOK

- The Food and Nutrition service program strives to provide school food services consistent with the nutritional needs of students and provide school food services that contribute to the student's educational experiences and the development of desirable eating habits.
- 8510 - WELLNESS POLICY
  - The District is committed to providing a healthy environment for students and staff within the school environment, recognizing that individuals must be physically, mentally, and socially healthy in order to promote wellness and academic performance.
  - The District focuses on achieving five goals: nutrition, physical education, physical activity: recess, health & nutrition literacy and preventive healthcare.
- 8531 - FREE AND REDUCED-PRICE MEALS
  - All students determined to be economically needy shall be provided upon request a free or reduced-price meal or meals at school.

### **Fundraising**

- 5830 – STUDENT FUNDRAISING
  - Student fundraising by students is limited in order to prevent disruption and includes student solicitation and collection of money for any purpose including collection of money in exchange for tickets, papers, or any other goods or services. Student fundraising in school, on school property, or at any school-sponsored event is permitted only when the profit is to be used for school purposes or for an activity connected with the schools.
  - No student, school organization, or member of the school staff may solicit funds in the name of the school from the public for any purpose without prior approval of the school principal and the Region Superintendent or his/her designee. All approvals must be in writing using the approved District forms and must be retained at the school for audit purposes.
- 6605 – CROWDFUNDING
  - Crowdfunding activities aimed at raising funds for a specific classroom or school activity, including extra-curricular activity, or to obtain supplemental resources (e.g., supplies or equipment) that are not required to provide a free appropriate public education to any students in the classroom may be permitted, but only with the specific approval by the principal and the region administrator. Crowdfunding for specific causes requires the approval of the Superintendent or his/her designee.





# MIAMI-DADE COUNTY PUBLIC SCHOOL DISTRICT'S UNIVERSAL PARENT/STUDENT HANDBOOK

- 9211 – SCHOOL – ALLIED AND OTHER OUTSIDE SUPPORT ORGANIZATIONS

- The School Board appreciates the efforts of all organizations whose objectives are to enhance the educational experiences of District students, to help meet educational needs of students and/or provide extra educational benefits.

## Health Screening

- 2410 - SCHOOL HEALTH SERVICES PROGRAM

- The health services provided by the District shall supplement, not replace, parental responsibility, and shall appraise, protect, and promote student health. These services shall be designed to encourage parents to devote attention to child health, to discover health problems, and to encourage the use of the services of physicians, dentists, and community health agencies as needed.
- Vision, hearing, scoliosis, and growth and development screenings are conducted based on mandated grade levels. Screenings do not substitute a thorough examination in a medical providers office. Parents/guardians must provide the school with written notification if you **do not** want your child to participate in the screening program.

## Homework

- 2330 - HOMEWORK

- Homework is an essential component of the learning process for students with the assignment of meaningful learning activities. Assignments should be based on learning outcomes that build students' conceptual understanding, develop thinking skills, and focus on the application of knowledge.

## Internship

- 2424 - STUDENT INTERNSHIPS

- Student participation in an internship program authorized by the High School to Business Career Enhancement Act may serve as a positive educational experience and provide a foundation for future employment opportunities.

## Parent Choice Student Transfers

- 2431 - INTERSCHOLASTIC ATHLETICS

- All activities relating to competitive sport contests, games, or events involving individual students or teams of students from high schools in this District with those from a high school in another district.
- All high schools shall be members of and governed by the Florida High School Athletic Association (FHSAA) rules and regulations and shall comply with the eligibility requirements established by the FHSAA.



# MIAMI-DADE COUNTY PUBLIC SCHOOL DISTRICT'S UNIVERSAL PARENT/STUDENT HANDBOOK

- 5120 - STUDENT SCHOOL ASSIGNMENT AND ATTENDANCE BOUNDARY COMMITTEE
  - The assignment of students to District schools shall be consistent with the best interests of students and the best use of District resources.
- 5131 – CONTROLLED OPEN ENROLLMENT/PARENT / STUDENT TRANSFERS
  - This policy governs all regular school transfers from one (1) school to another, except for transfers to Magnet programs/schools that are subject to specific admissions requirements and governed by School Board Policy 2370, Magnet Programs/Schools.
  - Controlled Open Enrollment allows the School District to make K-12 school assignments using parents indicated preferential educational choice in-county and out-of-county. This section of the policy does not apply to charter schools. Charter schools must adopt their own controlled open enrollment plan.
  - Controlled Open Enrollment is active during a specific window period between end of year and the subsequent school year.

## Parent Involvement

- 2111 - PARENT INVOLVEMENT– A HOME-SCHOOL-DISTRICT PARTNERSHIP
  - A collaborative environment is encouraged in which the parents and families of District students are invited and encouraged to be involved stakeholders in the school community. This policy establishes the framework and responsibilities for implementation of strategies to increase family and community involvement. A copy of this policy must be distributed to all parents.
- 9210 - PARENT ORGANIZATIONS
  - The Parent-Teacher/Parent-Teacher-Student Associations (PTA/PTSA) in the District are acknowledged as sincerely interested in, and staunch supporters of public education in Miami-Dade County.

## Pledge of Allegiance

- 8810 - THE AMERICAN FLAG AND OFFICIAL MOTTO OF THE STATE OF FLORIDA
  - The Pledge of Allegiance shall be recited at the beginning of the day in every school.
  - A student has the right not to participate in reciting the pledge. Upon written request by his/her parent, the student must be excused from reciting the pledge, including standing and placing the right hand over his/her heart.

## Privacy



# MIAMI-DADE COUNTY PUBLIC SCHOOL DISTRICT'S UNIVERSAL PARENT/STUDENT HANDBOOK

- 2416 - STUDENT PRIVACY AND PARENTAL ACCESS TO INFORMATION
  - Parents have the right to inspect, upon request, a survey or evaluation created by a third party or any instrument used in the collection of personal information before the survey/evaluation is administered or distributed by the school to the student. The parent will have access to the survey/evaluation or instrument within a reasonable period of time after the request is received by the principal.

## **Schools of Choice/Magnet Schools**

- 2370 - MAGNET PROGRAMS/SCHOOLS
  - Magnet programs/schools broaden public school choice, stem declining enrollment, mitigate overcrowding, help comply with Federal and State-mandated public school choice provisions, accommodate parent/student interest, improve the quality of education, and promote diverse student enrollments. Magnet programs/schools are unique educational programs operating within the District, for which additional resources and/or ancillary services may be provided to help make such educational experiences available to students beyond a single attendance boundary area.

## **School Transportation/Bus Safety Conduct**

- 8600 – TRANSPORTATION
  - Students living more than two miles from their home school will be eligible for District-provided bus transportation. Students who attend school out of their home school zone will not be eligible for District-provided transportation.

## **Special Education/Section 504**

- 2260.01 SECTION 504 PROCUDURES FOR STUDENTS WITH DISABILITIES
  - A student is entitled to a free appropriate public education FAPE and may be entitled to Section 504 accommodations if s/he has a physical or mental impairment that substantially limits one (1) or more major life activities.
- 2460 – EXCEPTIONAL STUDENT EDUCATION
  - The School Board shall provide a free, appropriate, public education for students with disabilities according to State and Federal laws, rules, and regulations and shall implement the procedures document entitled Exceptional Student Education Policies and Procedures.
- FLORIDA STATUTES, SECTION 1003.572 - PUBLIC-PRIVATE COLLABORATION
  - Parents who wish to request public-private collaboration in the educational setting should direct requests to the Principal for application of District procedures. Requests should be made in writing on District forms and specify the purpose of the collaboration. The principal will review requests and provide approval in accordance with statutory guidelines.



# MIAMI-DADE COUNTY PUBLIC SCHOOL DISTRICT'S UNIVERSAL PARENT/STUDENT HANDBOOK

## **Student Activities**

- **5845 - STUDENT ACTIVITIES**

- All clubs and organizations approved by the principal to operate within the school must comply with this district policy. A student who wishes to represent the school through interscholastic competitions or performance must comply with the criteria set forth in policy.

## **Student Records/Access to Student Records**

- **8330 - STUDENT RECORDS**

- Parents and eligible students have the right to access education records, including the right to inspect and review those records, and have the right to waive their access to their education records in certain circumstances. Prior written consent of the parent, guardian, or eligible student shall be obtained prior to disclosing personally identifiable student information, except under certain circumstances.

- **8350 - CONFIDENTIALITY**

- A student's educational record and all personally identifiable information shall not be properly released except on the condition that the information being transferred will not be subsequently released to any other party without first obtaining the consent of the parent or adult/eligible student.

## **Student Services**

- **2290 - CHARACTER EDUCATION**

- The School Board shall assist all students in developing the core values and strength of character needed for them to become caring, responsible citizens at home, school, and in the community. There are nine core values that form the basis for the character education program. These values are Citizenship, Cooperation, Fairness, Honesty, Kindness, Integrity, Pursuit of Excellence, Respect, and Responsibility.

- **5530 - DRUG PREVENTION**

- Schools shall strive to prevent drug abuse and help drug abusers through educational means.
- The use, possession, concealment, or distribution of any drug or any drug-related paraphernalia, or the misuse of a product containing a substance that can provide an intoxicating or mood-altering effect or the misuse of any "over-the-counter" medications or substances are prohibited on school grounds, on school vehicles, and at any school-sponsored event.

## **Title I – Schoolwide Program**



# MIAMI-DADE COUNTY PUBLIC SCHOOL DISTRICT'S UNIVERSAL PARENT/STUDENT HANDBOOK

- 2261 - TITLE I SERVICES

- The School Board elects to augment the educational program of disadvantaged students through the use of Federal funds, in accordance with the Elementary and Secondary Education Act (ESEA) of 1965, as reauthorized under the Every Student Succeeds Act of 2015. The ESEA is based on four (4) basic principles: stronger accountability for results, increased flexibility and local control, expanded options for parents, and an emphasis on proven educational methods. Parents of participating students are encouraged to be involved in programs, activities, and procedures that are planned and implemented to support children's academic growth.

## Technology

- 7540 – COMPUTER TECHNOLOGY AND NETWORKS

- The School Board is committed to the effective use of technology to both enhance the quality of student learning and the efficiency of Board operations. The School Board prohibits any access and use of social media by students and staff members from the District's network, except to the District's collaboration sites and/or approved sites as directed by the Superintendent.

- 7540.01 – TECHNOLOGY PRIVACY

- All computers, telephone systems, electronic mail systems, and voice mail systems are the District's property and are to be used primarily for business purposes. The District has the right to access and review all electronic and voice mail, computer files, data bases, and any other electronic transmissions contained in or used in conjunction with the District's computer system, telephone system, electronic mail system, and voice mail system.

- 7540.03 – STUDENT RESPONSIBLE USE OF TECHNOLOGY, SOCIAL MEDIA, AND DISTRICT NETWORK SYSTEMS

- The School Board provides students access to a large variety of technology and network resources which provide multiple opportunities to enhance learning and improve communication within the school district and the community. All users must, however, exercise appropriate and responsible use of school and District technology and information systems. Users include anyone authorized by administration to use the network. This policy is intended to promote the most effective, safe, productive, and instructionally sound uses of network information and communication tools.

- 7540.06 – STUDENT ELECTRONIC MAIL

- This policy establishes the use of District student electronic mail (e-mail) system by students, their parents and others and applies to any and all electronic messages composed, sent or received by anyone using the District's student e-



# MIAMI-DADE COUNTY PUBLIC SCHOOL DISTRICT'S UNIVERSAL PARENT/STUDENT HANDBOOK

mail system. Authorized users of e-mail are students, their parents and any other individuals or groups issued District student e-mail accounts

## **Threat Assessments**

- FLORIDA STATUTES, SECTION 1006.07(7)
  - The Marjory Stoneman Douglas Act, among other things, requires the school district to form Threat Assessment Teams at each school to coordinate resources and assessment and intervention with individuals whose behavior may pose a threat to the safety of school staff and students.

## **Visitors**

- 9150 - SCHOOL VISITORS
  - Parents, other adult residents of the community, and interested educators are encouraged to visit schools. All visitors must present identification that will be processed through the District's RAPTOR system prior to being permitted entry into the school grounds.
  - The Principal has the authority, however, to prohibit the entry of any person to a school or expel any person when there is reason to believe the presence of such person would be detrimental. If an individual refuses to leave the school grounds or creates a disturbance, the principal is authorized to request assistance from School Police or the local law enforcement agency to remove the individual. A visitor's refusal to adhere to the school principal's directive to leave the school grounds, will subject the visitor to arrest.

## **Volunteer Program**

- 2430.01 - SCHOOL VOLUNTEERS
  - The School Board recognizes that certain programs and activities can be enhanced through the use of volunteers who have knowledge or skills that will be helpful to members of the school staff who are responsible for the conduct of those programs and activities. A school volunteer is any non-compensated person who may be appointed by the Superintendent or his/her designee. School volunteers may include, but are not limited to, parents, senior citizens, students, and others who assist the teacher or other members of the school staff.



MIAMI-DADE COUNTY PUBLIC SCHOOL  
DISTRICT'S UNIVERSAL PARENT/STUDENT HANDBOOK

**APPENDIX C – Disclosure at Time of Registration**



# MIAMI-DADE COUNTY PUBLIC SCHOOL DISTRICT'S UNIVERSAL PARENT/STUDENT HANDBOOK



MIAMI-DADE COUNTY PUBLIC SCHOOLS

## **DISCLOSURE AT TIME OF REGISTRATION**

Chapter 1006.07 (1)(b), requires that any student seeking admission to a public school in the State of Florida will provide the following information at the time of initial registration:

- 1) Has the student ever been expelled from any school, in or out of the State of Florida?**

YES ☐ NO ☐

If your answer to question 1 is "YES", please list each and every instance for which the student was expelled.

---

---

---

- 2) Please state whether the student has ever been arrested where the arrest resulted in the student being formally charged. If your answer is "YES", please list each and every arrest which resulted in a formal charge.**

---

---

---

- 3) Please state whether the student has ever been involved as a party in a case before the Juvenile Justice System? If so, state each action taken by the Juvenile Justice System which involved the student.**

---

---

---

- 4) Please state whether the student has any corresponding referrals to mental health services related to your answers to Questions 1, 2 and 3. If yes, please list them.**

---

---

---

Student's Name \_\_\_\_\_ ID. # \_\_\_\_\_

(Please Print)

Ethnic \_\_\_\_\_ (Check all that apply) Race: White ☐ Black ☐ Asian ☐  
Hispanic \_\_\_\_\_ American Indian ☐ Native Pacific Islander ☐

Date of Birth \_\_\_\_\_ Parent's/Guardian's Name \_\_\_\_\_

Address \_\_\_\_\_

Signature (Parent/Guardian) \_\_\_\_\_

Signature (Student) \_\_\_\_\_ Date Signed \_\_\_\_\_

FM-5740E Rev. (07-19)





# MIAMI-DADE COUNTY PUBLIC SCHOOL DISTRICT'S UNIVERSAL PARENT/STUDENT HANDBOOK

## APPENDIX D – Discrimination/Harassment Poster and Policy

**THE SCHOOL BOARD OF MIAMI-DADE COUNTY, FLORIDA**  
**ADHERES TO A POLICY OF NONDISCRIMINATION IN THE EDUCATIONAL AND WORK ENVIRONMENT**

### DISCRIMINATION / HARASSMENT

It is the policy of the School Board that all students and employees be treated with respect. The School Board affirmatively strives to provide a workplace and educational environment free from discrimination and harassment (including sexual harassment), as required by law. Through this policy, the School Board establishes its intent to provide equal access, opportunity, and treatment to students in the provision of educational programs and activities and to applicants and employees in all aspects of employment. Slurs, innuendos, hostile treatment, violence, or verbal or physical conduct against a student or employee reflecting on his/her race, ethnic or national origin, gender or any other of the categories described below, will NOT be tolerated by the School Board.

**The School Board Policy Covers the Following Protected Categories:**

<p><b>AGE</b> - This category prevents denial of employment and/or educational opportunities because of a person's age.</p> <p><b>CITIZENSHIP STATUS</b> - This category prevents denial of employment and/or educational opportunities because of a person's citizenship or immigration status.</p> <p><b>COLOR</b> - This category prevents denial and/or educational opportunities because of a person's skin tone. Color discrimination can occur within the same race; for example someone who has a darker complexion may discriminate against someone that has a lighter complexion.</p> <p><b>DISABILITY</b> - This category prevents denial of employment and/or educational opportunities because of a person has, or is perceived to have a permanent impairment that substantially limits or prevents a major life activity; for example: walking, seeing, hearing, talking, sitting, or standing.</p> <p><b>ETHNIC/NATIONAL ORIGIN</b> - This category prevents denial of employment and/or educational opportunities because of a person's ancestral place of origin; or because an individual has the physical, cultural or linguistic characteristics of a particular group.</p> <p><b>GENDER</b> - This category prevents denial of employment and/or educational opportunities because of a person's gender or sex.</p> <p><b>GENDER IDENTITY</b> - This category prevents denial of employment and/or educational opportunities because of a person's gender-related identity, appearance, expression or behavior, regardless of the individual's assigned sex at birth.</p> <p><b>GENETIC INFORMATION (GINA)</b> - This category prevents denial of equal employment and/or harassment because of a person's genetic information; it ensures that individuals are not treated differently because of genetic information.</p> <p><b>LINGUISTIC PREFERENCE</b> - This category prevents denial of employment and/or educational opportunities because of the language a person speaks.</p>	<p><b>MARITAL STATUS</b> - This category prevents denial of employment and/or educational opportunities because of a person's marital status; i.e. single, married, widowed, or divorced.</p> <p><b>POLITICAL BELIEFS</b> - This category prevents denial of employment and/or educational opportunities because of a person's support and/or affiliation or lack thereof with a particular political party.</p> <p><b>PREGNANCY</b> - This category prevents denial of employment and/or educational opportunities for women who are pregnant.</p> <p><b>RACE</b> - This category prevents denial of employment and/or educational opportunities because of a person's race. The five federally recognized racial categories are American Indian or Alaskan Native, Asian, Black or African American, Hawaiian or Other Pacific Islander, and White. Persons from a mixed racial background do not need to prove their exact heritage in order to assert that they have been discriminated against based on race. Likewise, this category covers persons being discriminated against because they are married to persons of a different race other than their own.</p> <p><b>RELIGION</b> - This category prevents denial of employment and/or educational opportunities because of a person's sincerely held religious beliefs.</p> <p><b>SEX</b> - This category prevents denial of equal employment and/or educational opportunities because of a person's male or female gender.</p> <p><b>SEXUAL ORIENTATION</b> - This category prevents denial of equal employment and/or educational opportunities because a person is, or is perceived to be, lesbian, gay, bisexual, or heterosexual.</p> <p><b>SOCIAL AND FAMILY BACKGROUND</b> - This category prevents denial of employment and/or educational opportunities because of a person's socio-economic, family and/or educational background.</p>
---	--

**Sexual Harassment will NOT be tolerated.**

**MIAMI-DADE COUNTY PUBLIC SCHOOLS (M-DCPS) DOES NOT DISCRIMINATE ON THE BASIS OF SEX IN ANY EDUCATION PROGRAM OR ACTIVITY THAT IT OPERATES AS REQUIRED BY TITLE IX. M-DCPS ALSO DOES NOT DISCRIMINATE ON THE BASIS OF SEX IN ADMISSIONS OR EMPLOYMENT.**

**RETALIATION AGAINST A STUDENT OR EMPLOYEE WHO FILES A COMPLAINT IS PROHIBITED BY LAW**

Retaliation is an adverse action taken against an individual because they engaged in a protected activity, such as complaining about discrimination, threatening to file a charge of discrimination, or participating in investigative proceedings.

For additional information about Title IX or any other discrimination/harassment concerns, contact the U.S. Department of Education Assistant Secretary for Civil Rights and/or:

**Office of Civil Rights Compliance (CRC)**  
 Executive Director/Title IX Coordinator  
 155 N.E. 15th Street, Suite P104E  
 Miami, Florida 33132  
 Phone: (305) 995-1580 TDD: (305) 995-2400  
 Email: [crc@dadeschools.net](mailto:crc@dadeschools.net)  
 Website: <http://www.hrdadeschools.net/civilrights/>

For information on Section 504 of the Rehabilitation Act of 1973 or any other student disability concerns contact:

**Division of Special Education**  
 504 Coordinator  
 1501 N.E. 2nd Avenue, Suite 409  
 Miami, Florida 33132  
 Phone: (305) 995-2037 TDD: (305) 995-2400  
 Email: [ese@dadeschools.net](mailto:ese@dadeschools.net)  
 Website: <http://ese.dadeschools.net>

Rev: 07/2020



# MIAMI-DADE COUNTY PUBLIC SCHOOL DISTRICT'S UNIVERSAL PARENT/STUDENT HANDBOOK

## Anti-Discrimination Policy

The School Board of Miami-Dade County, Florida adheres to a policy of nondiscrimination in employment and educational programs/activities and strives affirmatively to provide equal opportunity for all as required by:

Title VI of the Civil Rights Act of 1964 - prohibits discrimination on the basis of race, color, religion, or national origin.

Title VII of the Civil Rights Act of 1964 as amended - prohibits discrimination in employment on the basis of race, color, religion, gender, or national origin.

Title IX of the Education Amendments of 1972 - prohibits discrimination on the basis of gender. M-DCPS does not discriminate on the basis of sex in any education program or activity that it operates as required by Title IX. M-DCPS also does not discriminate on the basis of sex in admissions or employment.

Age Discrimination Act of 1975 - prohibits discrimination based on age in programs or activities.

Age Discrimination in Employment Act of 1967 (ADEA) as amended - prohibits discrimination on the basis of age with respect to individuals who are at least 40 years old.

The Equal Pay Act of 1963 as amended - prohibits gender discrimination in payment of wages to women and men performing substantially equal work in the same establishment.

Section 504 of the Rehabilitation Act of 1973 - prohibits discrimination against the disabled.

Americans with Disabilities Act of 1990 (ADA) - prohibits discrimination against individuals with disabilities in employment, public service, public accommodations and telecommunications.

The Family and Medical Leave Act of 1993 (FMLA) - requires covered employers to provide up to 12 weeks of unpaid, job-protected leave to eligible employees for certain family and medical reasons.

The Pregnancy Discrimination Act of 1978 - prohibits discrimination in employment on the basis of pregnancy, childbirth, or related medical conditions.

Florida Educational Equity Act (FEEA) - prohibits discrimination on the basis of race, gender, national origin, marital status, or handicap against a student or employee.

Florida Civil Rights Act of 1992 - secures for all individuals within the state freedom from discrimination because of race, color, religion, sex, national origin, age, handicap, or marital status.

Title II of the Genetic Information Nondiscrimination Act of 2008 (GINA) - prohibits discrimination against employees or applicants because of genetic information.

Boy Scouts of America Equal Access Act of 2002 - No public school shall deny equal access to, or a fair opportunity for groups to meet on school premises or in school facilities before or after school hours, or discriminate against any group officially affiliated with Boy Scouts of America or any other youth or community group listed in Title 36 (as a patriotic society).

Veterans are provided re-employment rights in accordance with P.L. 93-508 (Federal Law) and Section 295.07 (Florida Statutes), which stipulate categorical preferences for employment.

### In Addition:

School Board Policies 1362, 3362, 4362, and 5517 - Prohibit harassment and/or discrimination against students, employees, or applicants on the basis of race, color, ethnic or national origin, religion, marital status, disability, genetic information, age, political beliefs, sexual orientation, sex/gender, gender identification, social and family background, linguistic preference, pregnancy, citizenship status, and any other legally prohibited basis. Retaliation for engaging in a protected activity is also prohibited.

For additional information about Title IX or any other discrimination/harassment concerns, contact the U.S. Department of Education Asst. Secretary for Civil Rights or:

Office of Civil Rights Compliance (CRC)  
Executive Director/Title IX Coordinator  
155 N.E. 15th Street, Suite P104E  
Miami, Florida 33132  
Phone: (305) 995-1580 TDD: (305) 995-2400  
Email: [crc@dadeschools.net](mailto:crc@dadeschools.net) Website: <https://dadeschools.net/civilrights>

Revised 07/2020

